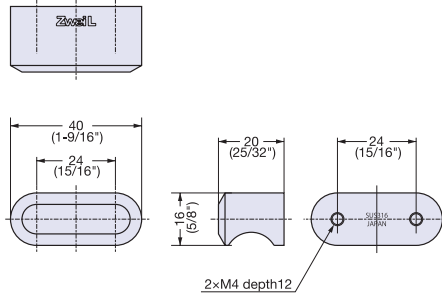


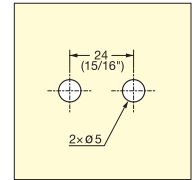
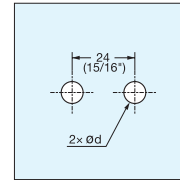
Zwei L Knob



ZL-1907



- For use with wood or tempered glass.
- Similar style to ZL-1504 door pulls.
- Includes stainless steel screws.



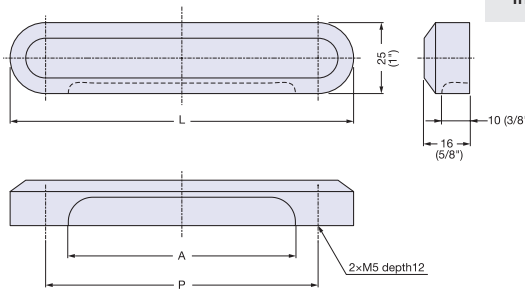
Glass Thickness:
4 or 5 mm, d = 5
6 mm, d = 6

Item No.	Material	Finish/Color	Weight (g)	Box (pcs)	Carton (pcs)
ZL-1907	316 Stainless Steel	Zwei L	78	2	20

Zwei L Knob



ZL-2503



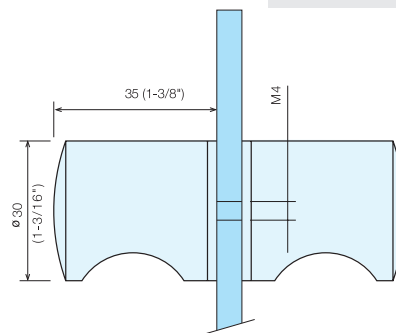
- Similar style to ZL-1505 door pulls.
- Includes stainless steel screws.

Item No.	Material	Finish/Color	L	P	A	Weight (g)	Box (pcs)	Carton (pcs)
ZL-2503-96	316 Stainless Steel	Zwei L	121 (4-3/4")	96 (3-25/32")	84 (3-5/16")	320	4	40
ZL-2503-160			185 (7-9/32")	160 (6-5/16")	148 (5-53/64")	496	2	20

BACK TO BACK GLASS DOOR KNOB



DSI-126D



- For glass thickness 8-12 mm (5/16"-1/2").
- For use with tempered glass.

Item No.	Material	Glass Thickness (mm)	Finish	Box (set)
DSI-126D	304 Stainless Steel	8~12	Stain	1