

# CABLE GROMMET

# LSU, LS

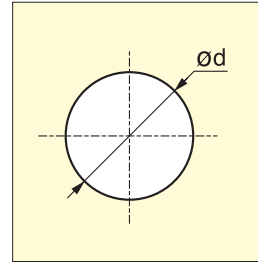
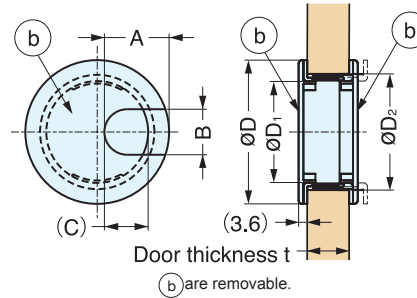
• Double-sided grommets.



LS60WHT



LS60BLK



Item No.	Finish	Material	D	D <sub>1</sub>	D <sub>2</sub>	A	B	C	t	d	Weight (g)	Box (pcs)	Carton (pcs)						
LSU60WT	White	ABS	60 ( 2-3/8" )	42.5 ( 1-43/64" )	48.5	27	19	18.0	12~18 (1/2"~3/4")	48.5	19	20	160						
LSU60BL	Black								18~24 (3/4"~1")										
LS60WT	White								76 ( 3" )	58.2 ( 2-19/64" )	64.2	34	22	25.1	25~40 (1"~1-9/16")	64.2	25	12	96
LS60BL	Black																		
LS76WT	White																		
LS76BL	Black																		

# CABLE GROMMET

# CHC

• Choose from 1/2" (12 mm) or 19/32" (15 mm) grommets, perfect for phone, fax, or LAN data cables.

Weight: CHC-18 8.3 g  
 CHC-22 14.5 g



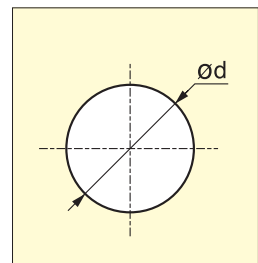
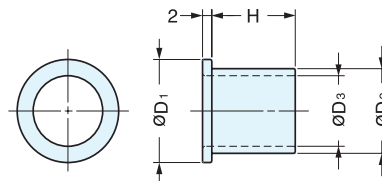
CHC-22/GB  
(Antique Brass)



CHC-18/NI  
(Nickel)



CHC-18/GA  
(Gold)



Item No.	Material	Finish	H	D <sub>1</sub>	D <sub>2</sub>	D <sub>3</sub>	d	Box (pcs)
CHC-18/NI	Brass	Satin Nickel	16 ( 5/8" )	18 ( 11/16" )	14 ( 9/16" )	12 ( 1/2" )	14.5 ( 9/16" )	120
CHC-18/GA		Gold						
CHC-18/GB		Antique Brass						
CHC-22/NI		Satin Nickel	18 ( 11/16" )	22 ( 7/8" )	18 ( 11/16" )	15 ( 19/32" )	18.5 ( 11/16" )	60
CHC-22/GA		Gold						
CHC-22/GB		Antique Brass						