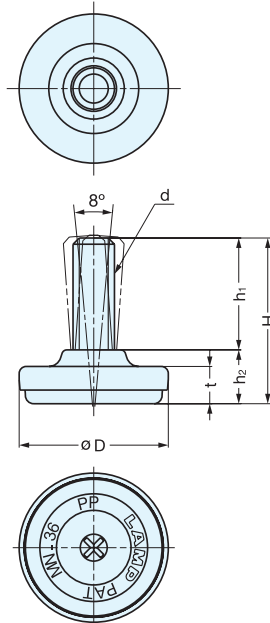


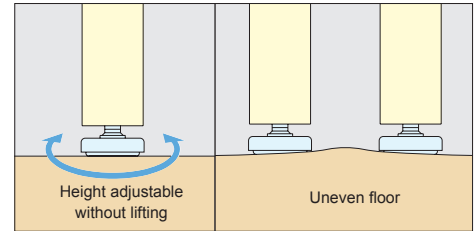
LEVELING GLIDE



MN



- Easy installation with phillips screw driver.
- Swivels approximately 8° to compensate for uneven floors.
- White polypropylene base to prevent floor damage.
- Include glide base.



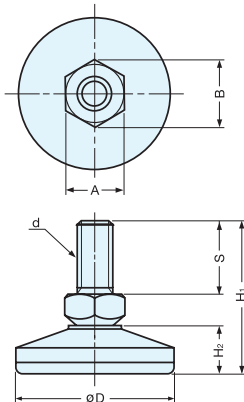
Part Name	Material	Finish
Cover	304 Stainless Steel	Satin
Bolt	Steel	Chrome
Base	Polypropylene	Natural

Item No.	D	H	h ₁	h ₂	t	d	Load Capacity (kg)	Weight (g)	Box (pcs)	Carton (pcs)
MN-25	25 (63/64")	40 (1-37/64")	27	13	9	W5/16-18	120 (264 lbs)	26	100	600
MN-32	32 (1-17/64")	40 (1-37/64")	27	13	9	W3/8-16	160 (352 lbs)	34	80	480
MN-36	36 (1-27/64")	40 (1-37/64")	27	13	9	W3/8-16		39	60	360
MN-40	40 (1-37/64")	40 (1-37/64")	27	13	9	W3/8-16		42	50	300
MN-50	50 (1-31/32")	50 (1-31/32")	34	16	11	W1/2-12		77	20	120

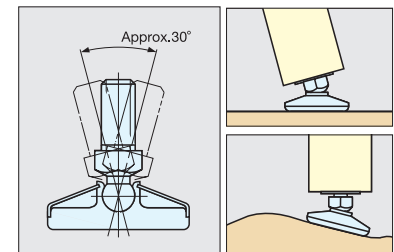
LEVELING GLIDE



RP



- Compensates for uneven of floors.
- Include glide base.



Part Name	Material	Finish
Base Cover	304 Stainless Steel	Satin
Bolt	Steel	Clear Zinc Chromate
Base	Polyamide	Natural

Item No.	A	D	B	H ₁	S	H ₂	d	Load Capacity (kg)	Weight (g)	Box (pcs)	Carton (pcs)
RP-25M6	8 (5/16")	25 (63/64")	9.2	31.0 (1-7/32")	14	9.7	M6x1.0	60 (132 lbs)	11	50	500
RP-30M8	10 (25/64")	30 (1-3/16")	11.5	37.5 (1-15/32")	19	11.2	M8x1.25	110 (242 lbs)	21	35	350
RP-30N25							W5/16.0				
RP-40M10	13 (33/64")	40 (1-37/64")	15.0	42.5 (1-43/64")	20	13.7	M10x1.5	160 (352 lbs)	38	25	250
RP-40N3							W3/8.0				
RP-50M12	17 (43/64")	50 (1-31/32")	19.6	51.0 (2")	25	16.0	M12x1.75	320 (704 lbs)	70	15	
RP-70M14	19 (3/4")	70 (2-3/4")	22.0	66.5 (2-5/8")	30	24.7	M14x2.0	622 (1368 lbs)	150	10	100