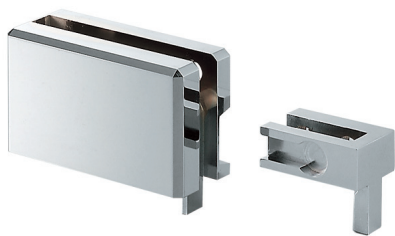
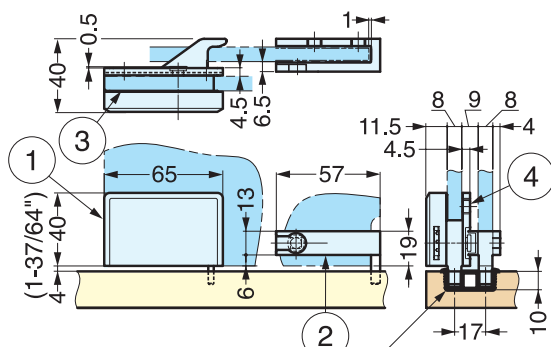


GLASS DOOR LOCK FOR SLIDING DOOR

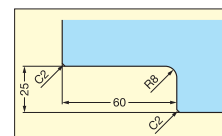
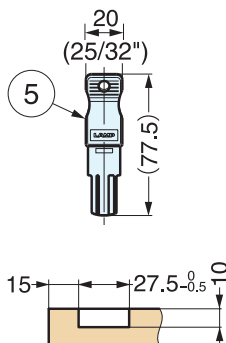
XL-GC03



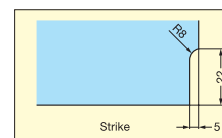
- For bypass sliding glass doors.
- Key hole located on the right side for a clean appearance.
- Includes 2 keys.
- Use with XL-GC Series glass showcase hardware (sold separately, P.604).
- Please order 1pc per 2 doors.



Bottom Rail
XL-GC03-GL1200
Sold separately (P.604)



Cut Out Dimension (Body)



Cut Out Dimension (Strike)

Item No.	Glass Thickness (mm)	Key Changes	Key (pcs)	Weight (g)	Box (pcs)	Carton (pcs)
XL-GC03-C	8 (5/16")	24	2	351	1	24

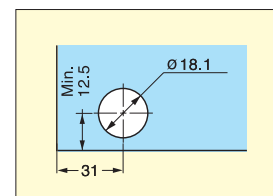
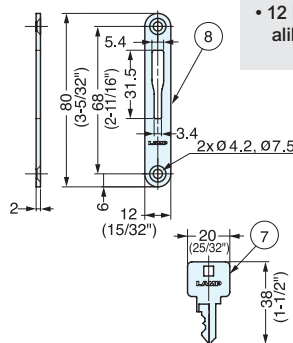
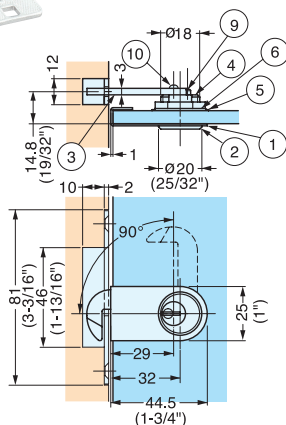
No.	Part Name	Material	Finish/Color
①	Body	Zinc Alloy	Chrome
②	Strike		
③	Spacer	Synthetic Rubber	Black
④	Screws	304 Stainless Steel	Plain
⑤	Key	Brass/ABS	Nickel/Black

GLASS DOOR CAM LOCK

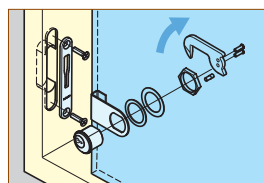
2100GLK



- For swinging glass doors with glass 5/32" to 1/4" (4-6 mm) thick.
- Requires $\varnothing 23/32"$ (18.1 mm) bore for installation.
- Non-handed, swinging cam can be mounted to swing left or right.
- Key acts as a knob and can only be removed when locked.
- 12 key changes are available; please specify keyed alike or differently when ordering.



Cut Out Dimension



Item No.	Glass Thickness (mm)	Key Changes	Key (pcs)	Weight (g)	Box (pcs)	Carton (pcs)
2100GLK	4~6 (5/32"~1/4")	12	1	75	12	120

No.	Part Name	Material	Finish/Color
①	Front Plate	304 Stainless Steel	Satin
②	Body	Brass	Satin Nickel
③	Cam	Steel	Nickel
④	Hex Nut	Brass	Nickel
⑤	Plastic Washer	Polyamide	Natural
⑥	Washer	Steel	Nickel
⑦	Key	Brass	Nickel
⑧	Counterplate	Steel	Nickel
⑨	Pin	Brass	Plain
⑩	Screw	Steel	Nickel