

# EXTENSION HANGER

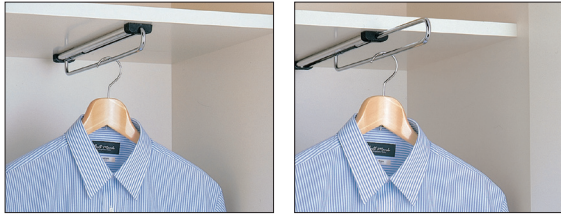
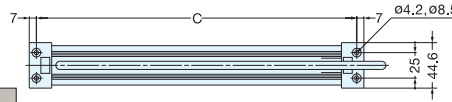
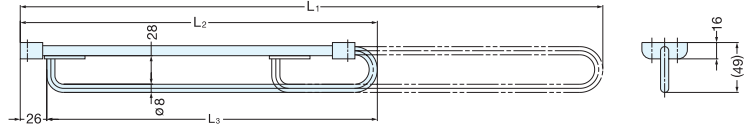
**LOAD CAPACITY**  
3 kg  
6.6 lbs

**TEST 5**  
P.696

**4x25**  
**STAINLESS**

# UH SERIES

- Space-saving, undermount design for narrow spaces.
- Includes 1" (M4 × 25) long screws.



Part Name	Material	Finish/Color
Hanger Rod	304 Stainless Steel	Chrome/Black
Rod Retainer	Steel	
End Cap	Plastic	

Item No.	L <sub>1</sub>	L <sub>2</sub>	L <sub>3</sub>	C	Load Capacity (kg)	Weight (g)	Box (pcs)	Carton (pcs)
UH-300	491 (19-21/64")	300	274	264 (10-25/64")	3 (6.6 lbs)	365	5	30
UH-350	571 (22-31/64")	350	324	314 (12-23/64")		440		
UH-400	636 ( 25-1/32" )	400	374	364 (14-21/64")		505		
UH-450	721 (28-25/64")	450	424	414 (16-19/64")		570		

# EXTENSION HANGER

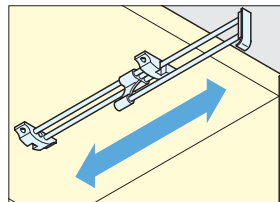
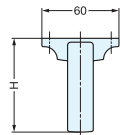
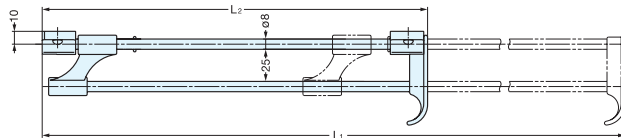
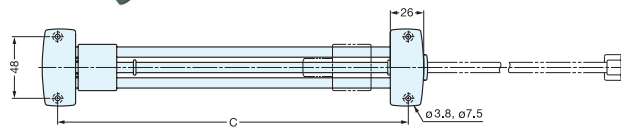
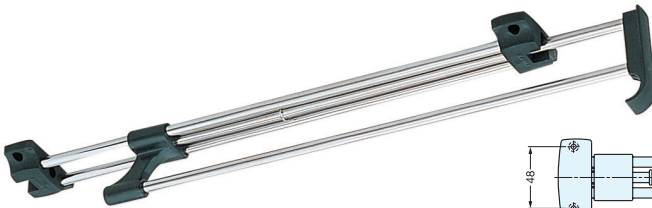
**LOAD CAPACITY**  
4-6 kg  
8.8-13.2 lbs

**TEST 5**  
P.696

**3.5x20**  
**STEEL**

# W SERIES

- Space-saving, undermount design for narrow spaces.
- Molded nylon finger grip for easy accessibility.
- Includes 3/4" (M3.5 × 20) long screws.



Part Name	Material	Finish/Color
Hanger Rod	Steel	Nickel/Black
Retainer Guide	Nylon	

Item No.	L <sub>1</sub>	L <sub>2</sub>	H	C	Load Capacity (kg)	Weight (g)	Box (pcs)	Carton (pcs)
W-300	498 (19-39/64")	300 (11-13/16")	73	273	6 (13.2 lbs)	485	5	30
W-350	556 (21-57/64")	350 (13-25/32")		323	5 ( 11 lbs )	560		
W-400	628 (24-23/32")	400 ( 15-3/4" )		373	5 ( 11 lbs )	630		
W-450	698 (27-31/64")	450 (17-23/32")		423	4 (8.8 lbs )	715		