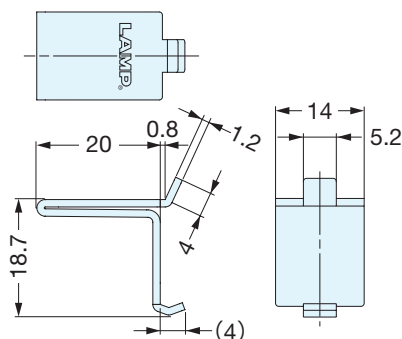


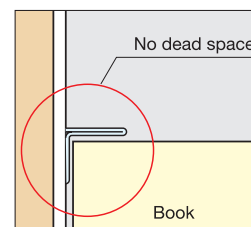
SHELF SUPPORT



SPF-20



- Shelf support for SP-1820.
- Designed to eliminate dead space.



Installation

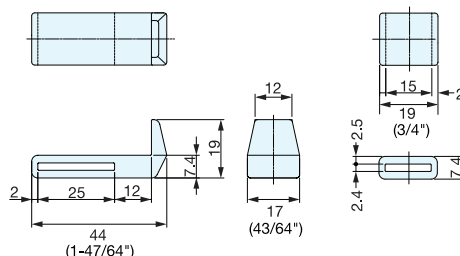
Item No.	Load Capacity (kg)	Weight (g)	Box (pcs)	Carton (pcs)
SPF-20	80 (176 lbs)/4 pcs	7	300	3000
SPF-20WT				

Material	Finish/Color
304 Stainless Steel	Satin, White

SHELF HOLDER

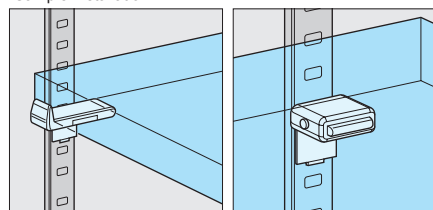


SPF-20A



- Plastic holder to keep the shelf in position.
- Used together with SPF-20. (sold separately)
- Distance from center of front shelf support to front shelf edge is 18~30 mm. (adjustable)
- One each of front and back holder sold as set.

Sample Installation



Front

Back

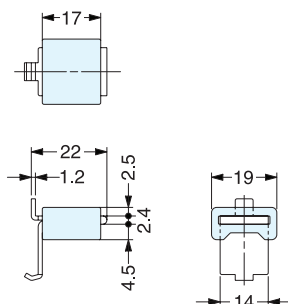
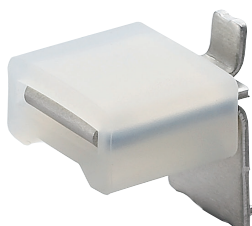
Item No.	Weight (g)	Box (pcs)	Carton (pcs)
SPF-20A	4	100	2500

Material	Color
Polyethylene	White

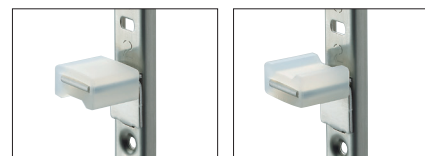
SHELF SUPPORT WITH LEVELING CAP



SPF-20LC



- Includes both shelf support (SPF-20) & leveling cap.
- Shelf level can be adjusted by flipping over the cap.



Item No.	Weight (g)	Box (pcs)	Carton (pcs)
SPF-20LC	9.5	200	2000

Part Name	Material	Finish/Color
Cap	Silicone	Milky White
Body	304 Stainless Steel	Satin