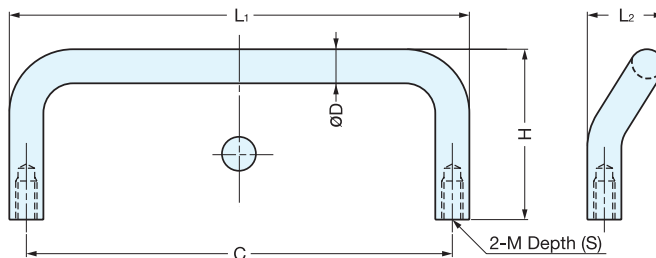


# OFFSET WIRE PULL



**H-75-C**



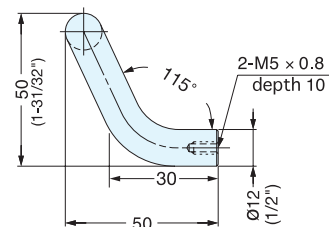
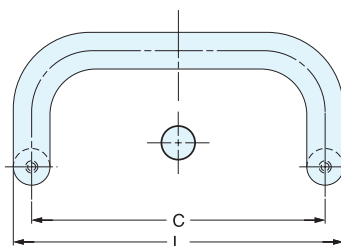
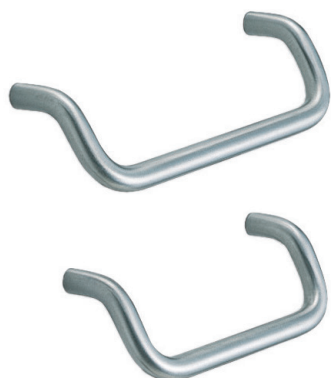
Material	Finish
304 Stainless Steel	Polished

Item No.	L <sub>1</sub>	L <sub>2</sub>	S	H	C	øD	M	Weight (g)	Box (pcs)	Carton (pcs)
H-75-C-66	66	16	7	30.0 (1-3/16")	60 (2-23/64")	6	M4	23	100	400
H-75-C-86	86			31.5 (1-15/64")	80 (3-5/32")			28		
H-75-C-108	108	18	10	32.0 (1-17/64")	100 (3-15/16")	8	M5	54	50	200
H-75-C-128	128			40.0 (1-37/64")	120 (4-23/32")			70		

# OFFSET WIRE PULL



**LF-12**



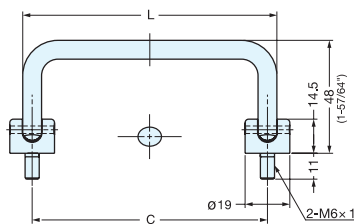
Item No.	L	C	Weight (g)	Box (pcs)	Carton (pcs)
LF-12-96	108	96 (3-25/32")	182	10	80
LF-12-128	140	128 (5-3/64")	211		60
LF-12-160	172	160 (6-19/64")	236		

Material	Finish
304 Stainless Steel	Satin

# FOLDING HANDLE



**HK**



- 90-degree folding handle.
- Handle clicks into open and closed position.

Item No.	C	L	Load Capacity (kg)	Weight (g)	Box (pcs)	Carton (pcs)
HK-80	80 (3-5/32")	88	50 (110 lbs)	125	10	100
HK-100	100 (3-15/16")	108		136		
HK-120	120 (4-23/32")	128		146		

Material	Finish
304 Stainless Steel	Mirror