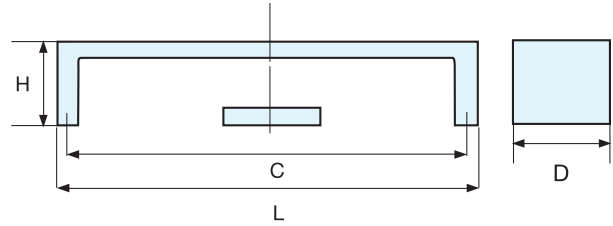


HANDLE



40 SERIES



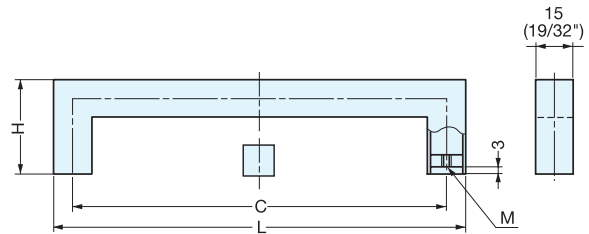
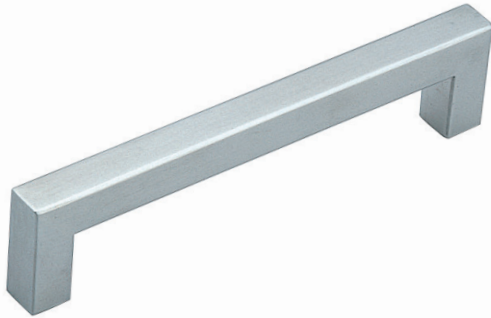
Item No.	L	C	H	D	Weight (g)	Box (pcs)	Carton (pcs)
40128	138 (5-7/16")	128 (5-3/64")	35	40 (1-37/64")	166	10	40
40160	170 (6-11/16")	160 (6-19/64")			198		
40192	202 (7-61/64")	192 (7-9/16")			219		

Material	Finish
304 Stainless Steel	Satin

HANDLE



KPH



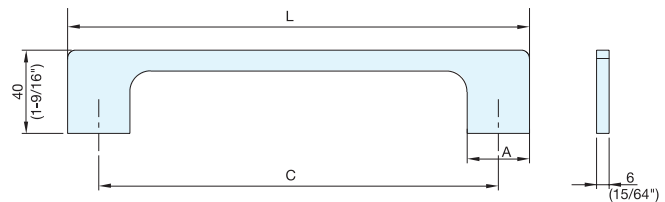
Item No.	L	C	H	M	Weight (g)	Box (pcs)	Carton (pcs)
KPH-160	176	160 (6-19/64")	40 (1-37/64")	M4 × 0.7	100	10	100
KPH-192	208	192 (7-9/16")			115		
KPH-224	240	224 (8-13/16")			130		
KPH-256	272	256 (10-5/64")	50 (1-31/32")	M5 × 0.8	143	10	100
KPH-288	304	288 (11-11/32")			160		

Material	Finish
304 Stainless Steel	Satin

HANDLE



DSI-110



Item No.	C	L	A	Weight (g)	Box (pcs)	Carton (pcs)
DSI-110- 96	96 (3-25/32")	126 (4-15/16")	30 (1-3/16")	135	25	250
DSI-110-128	128 (5-1/16")	158 (6-3/16")		152		
DSI-110-160	160 (6-5/16")	190 (7-1/2")		190		
DSI-110-192	192 (7-9/16")	222 (8-3/4")		230	10	100
DSI-110-320	320 (12-19/32")	350 (13-13/16")		380		
DSI-110-512	512 (20-5/32")	542 (21-5/16")		610		

Material	Finish
304 Stainless Steel	Satin

