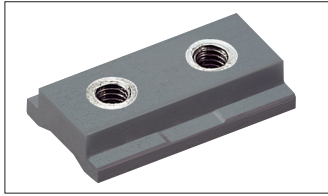


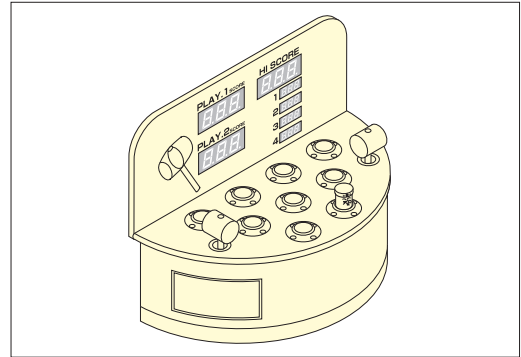
# ULTRA MINI GUIDE BLOCK & RAIL



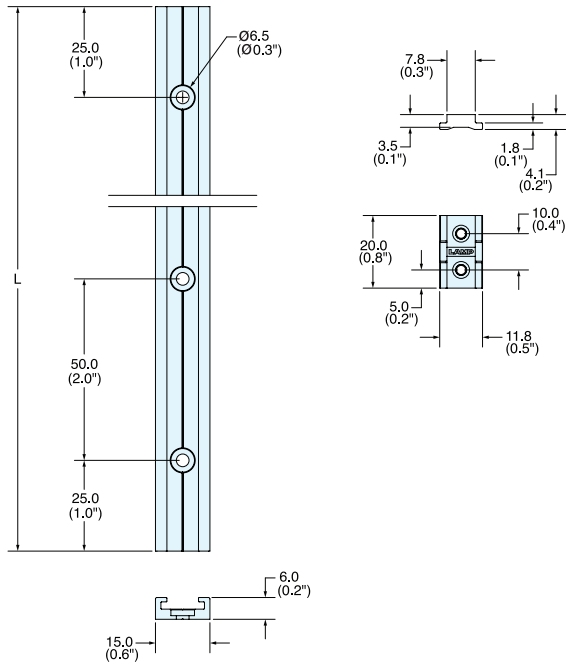
# MRS-15, MR-15CS



- Perfect for small stroke application.
- No lubricant (P. 415,416,417) needed.
- Block and rail sold separately.



MRS-15



\*Both ends of rail are not anodized.

No.	Material	Finish
①	Polyethylene (UL 94HB)	Grey
②	304 Stainless Steel	Plain
③	Aluminum	Anodized

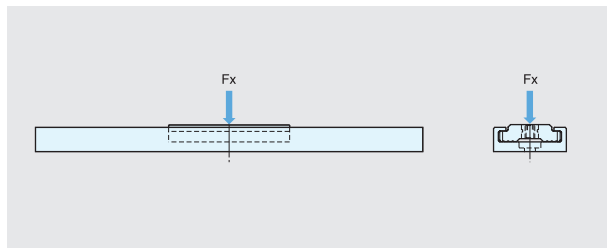
■ Block

Item No.	Weight (g)	Box (pcs)	Carton (pcs)
MR-15CS	1	150	1000

■ Rail

Item No.	L	N	Weight (g)	Box (pcs)
MRS15-100	100 (3-15/16")	2	14.5	200
MRS15-200	200 ( 7-7/8" )	4	29.0	200
MRS15-400	400 ( 15-3/4" )	8	58.0	100
MRS15-800	800 ( 31-1/2" )	16	117.0	80

MRS 15, MR-15CS LOAD RATING INFORMATION



Horizontal Static Load Fx	10.2 kgf (22.48 lbs)
Vertical Static Load Fy	3.0 kgf (6.61 lbs)

□ Reduction Factor

Certain reduction needs to be applied depending on application or environment.  
 Low speed/Low operation frequency = 70% to 100% of Load Rating  
 Moderate speed/High operation frequency = 35% to 65% of Load Rating  
 High operation frequency with Vibration & Shocks = 10% to 30% of Load Rating