

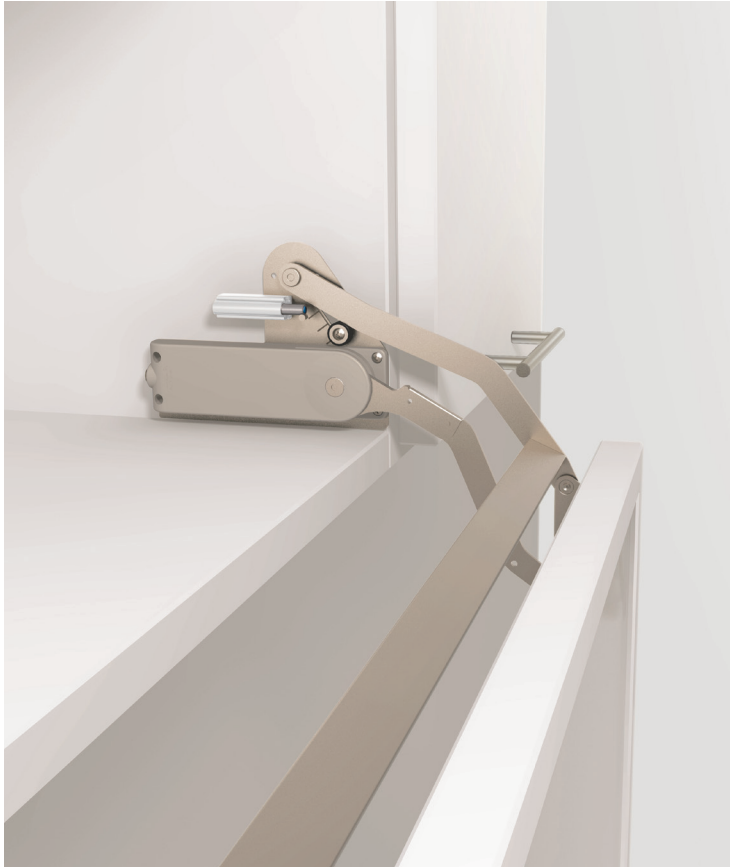
# VERTICAL SWING DOWN MECHANISM



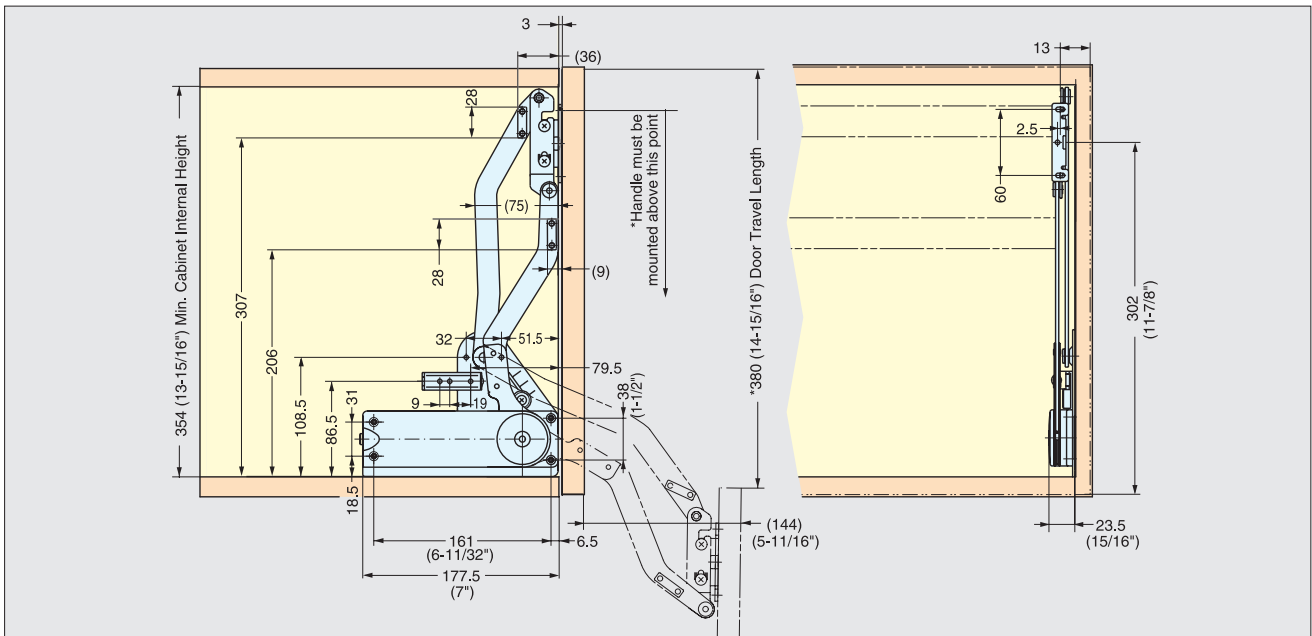
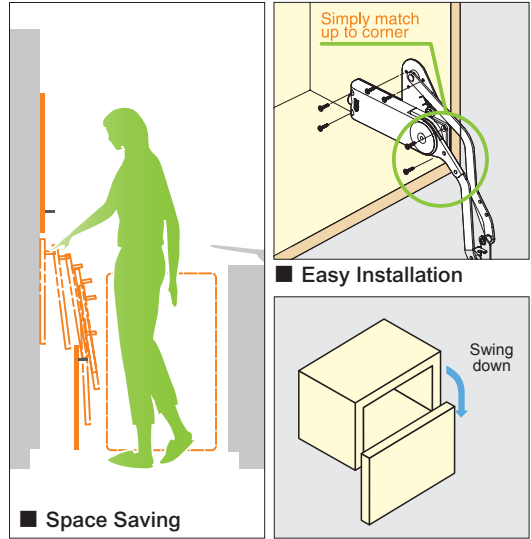
SLD

LID SUPPORTS

VERTICAL SWING DOWN MECHANISM



- Unique swing down mechanism will hold doors at the open position.
- Sleek & compact design.
- Easy installation.
- Adjustable arm mounting plate.
- Patented LAPCON technology provides a smooth and quiet motion.
- Successfully passed 30,000 open/close private cycle tests.
- Recommended Door Size and Weight:
  - Width, 600~900 mm (23-5/8"~35-7/16")
  - Height, 360~400 mm (14-1/8"~15-3/4")
  - Weight, 3~6 kg (6.6~13.2 lbs)



Material	Finish/Color
Steel	Nickel
Plastic	Grey

Item No	Door Weight (kg)	Box (set)	Carton (set)
SLD-3	3~4 ( 6.6~8.8 lbs )	5	50
SLD-4	4~5 ( 8.8~11.0 lbs )		
SLD-5	5~6 ( 11.0~13.2 lbs )		

Guide Bar Length

Door Type	Cabinet Width (mm)	
	600 ( 23-5/8" )	900 ( 35-7/16" )
Solid Wood Door	535 ( 21-1/16" )	835 ( 32-7/8" )
Frame Door	551 ( 21-3/4" )	851 ( 33-1/2" )

\*SLUB-835 (835 mm (32-7/8")) included unless specified.