

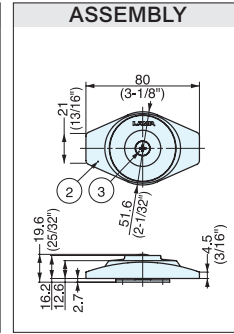
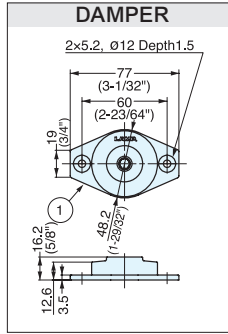
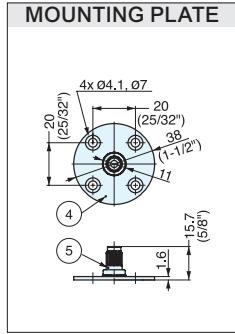
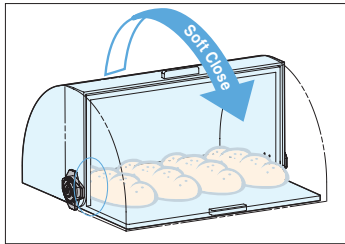
DISK DAMPER



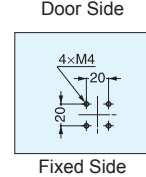
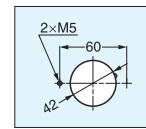
UDD



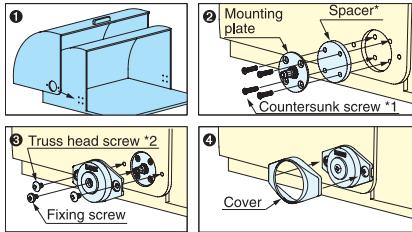
- Disc-shaped damper gently closes lid without slamming shut.
- Narrow profile for unobtrusive installation.
- Suitable for food service environments.
- Successfully passed 30,000 open/close private cycle test.
- Operating temperature: 5~35 °C (41~95°F)
- Spacer and installation screws are not included, and vary with application. Please contact customer service for more information.



Cut-Out Dimension

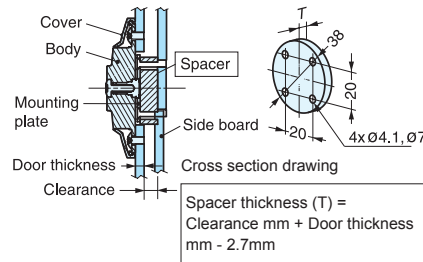


How to Install

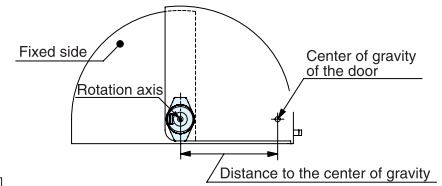


*1, *2 screws and Spacer are not included.

Spacer



Damper Selection



*Torque = Distance to the center of gravity x 1/2 x Door weight

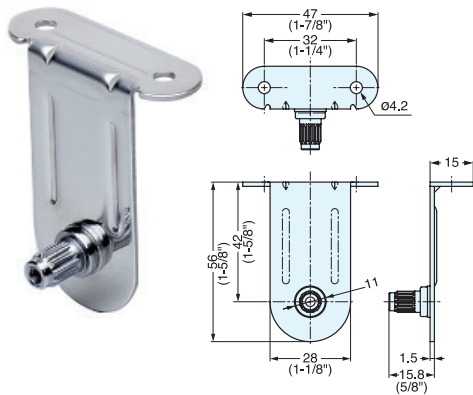
Item No.	Handing	Torque (kgf·cm)	Weight (g)	Box Qty (pcs)
UDD-S-L	Left	5.1~10.2 (4.4~8.9 lbs·in)	90	20
UDD-S-R	Right			
UDD-M-L	Left	10.2~20.4 (8.9~17.7 lbs·in)		
UDD-M-R	Right			
UDD-H-L	Left	20.4~30.6 (17.7~26.6 lbs·in)		
UDD-H-R	Right			

No.	Part Name	Material	Finish
①	Main Body	ABS Plastic	Light Grey
②	Cover		
③	Screws	Steel	Nickel
④	Mounting Plate		Zinc
⑤	Axis		

UDD DISK DAMPER BRACKET

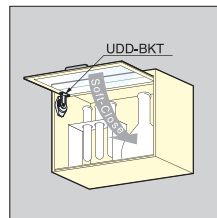


UDD-BKT

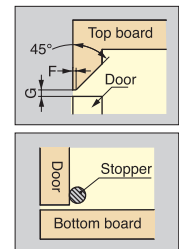
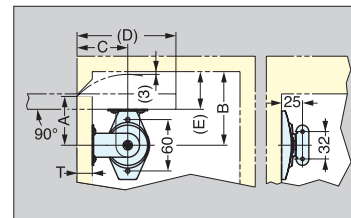


- Bracket for disk damper UDD for upward-opening door.
- Catch is needed for holding door in opened position (not included).
- Use SDS-50G face plate for glass/acrylic door.
- Stop required to prevent over rotation (not included).

Application Example



Cut-Out Dimension



T: Door Thickness	A	B	C	D	E	F	G
5	46	70	49	95	26	1	3
15	54	82	57	111	40	2	4
18	57	86	60	117	44	3	5

Item No.	Material	Finish
UDD-BKT	304 Stainless Steel	Plain