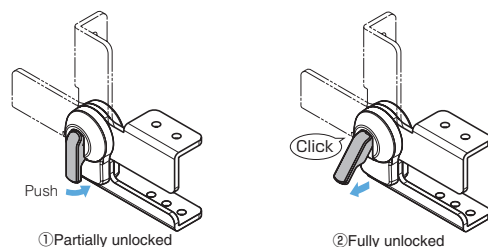
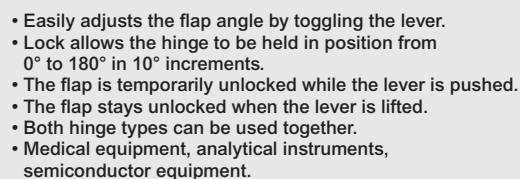
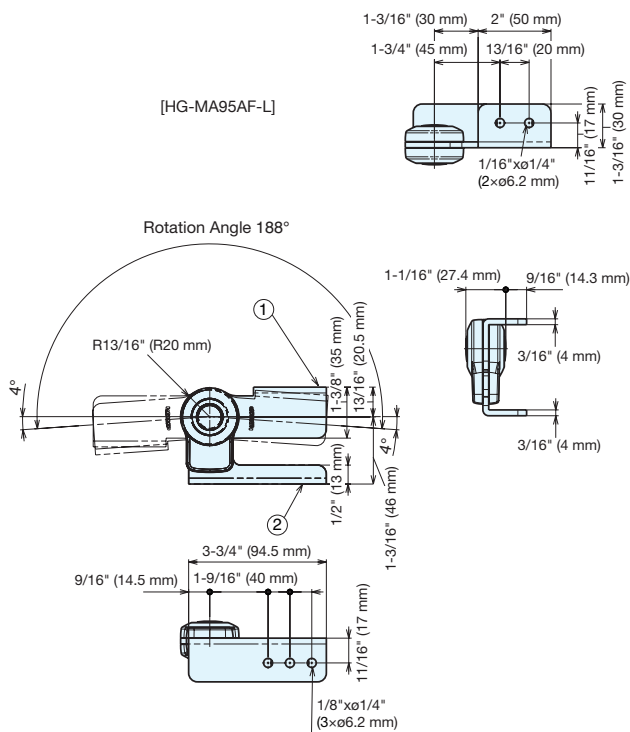
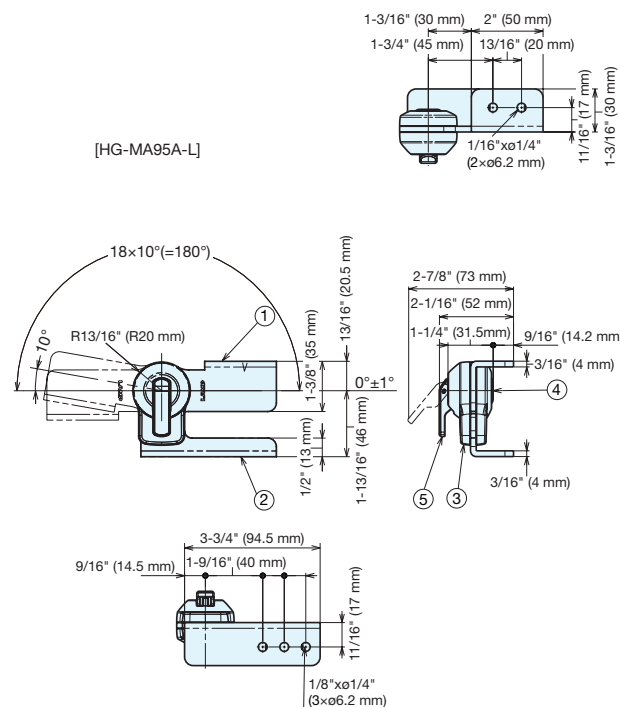


HG-MA95A



The flap is temporarily unlocked while the lever is pushed.

The flap stays unlocked when the lever is lifted.



No.	Part Name	Material	Finish
①	Bracket	Steel	Nickel
②	Base		
③	Plastic Cover	PC	Black
④	Pin	ABS	
⑤	Lever	PA	Light Gray

Left-handed shown. Right-handed is symmetrical.

Item No.	Position	Type	Max Torque lb.in / pc	Weight (g)
HG-MA95A-R	Right-handed	With lever	398.3	351
HG-MA95A-L	Left-handed			351
HG-MA95AF-R	Right-handed	Without lever	—	351
HG-MA95AF-L	Left-handed			351