

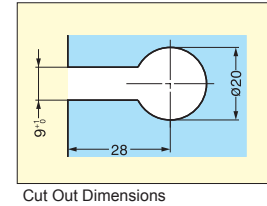
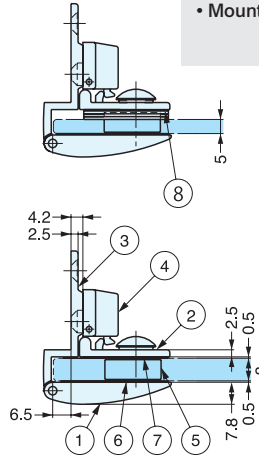
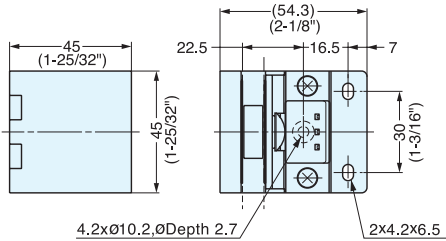
OVERLAY GLASS DOOR HINGE (W/ CATCH)



GH-456C



- Glass hinge with catch.
- For overlay use.
- Suitable for showcases
- Mounting position adjustable: Vertically±1 mm
Horizontally±1.2 mm



Item No.	Applicable Door Thickness	Applicable Glass Door Size /Pair	
GH-456C/SN	5-8 mm	W:600 mm (23-5/8") H:1200 mm (47") Maximum 15 kg (33 lbs)	
GH-456C/CR	5 mm : Use with 3 spacers 6 mm : Use with 2 spacers		
GH-456C/GA	8 mm : Spacer not required		
Item No.	Weight (g)	Box (pcs)	Carton (pcs)
GH-456C/SN	216	10	40
GH-456C/CR			
GH-456C/GA			

No.	Part Name	Material	Finish		
			SN	CR	GA
①	Face Plate	Brass	Satin Nickel	Chrome	Gold
②	Fixing Plate				
③	Mounting Plate				
④	Catch	PBT, POM	Black		
⑤	Glass Adjustment Block	Polyamide			
⑥	Pad A	PVC			
⑦	Pad B				
⑧	Spacer	Polypropylene			

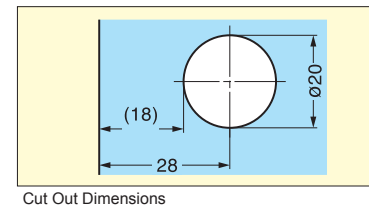
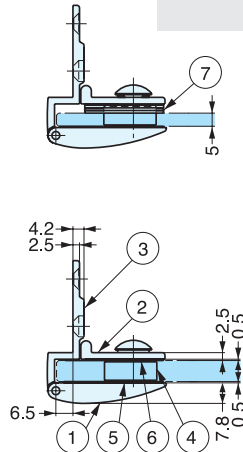
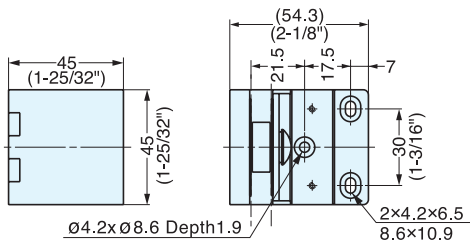
OVERLAY GLASS DOOR HINGE (W/O CATCH)



GH-456N



- For overlay use.
- Suitable for showcases
- Mounting position adjustable: Vertically±1 mm
Horizontally±1.2 mm



Item No.	Applicable Door Thickness	Applicable Glass Door Size /Pair	
GH-456N/SN	5-8 mm	W:600 mm (23-5/8") H:1200 mm (47") Maximum 15 kg (33 lbs)	
GH-456N/CR	5 mm : Use with 3 spacers 6 mm : Use with 2 spacers		
GH-456N/GA	8 mm : Spacer not required		
Item No.	Weight (g)	Box (pcs)	Carton (pcs)
GH-456N/SN	210	10	40
GH-456N/CR			
GH-456N/GA			

No.	Part Name	Material	Finish		
			SN	CR	GA
①	Face Plate	Brass	Satin Nickel	Chrome	Gold
②	Fixing Plate				
③	Mounting Plate				
④	Glass Adjustment Block	Polyamide	Black		
⑤	Pad	Rubber			
⑥	Spacer	Polypropylene			