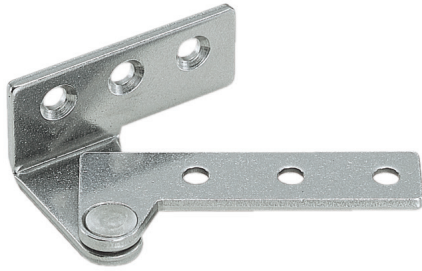


# OVERLAY DOOR PIVOT HINGE

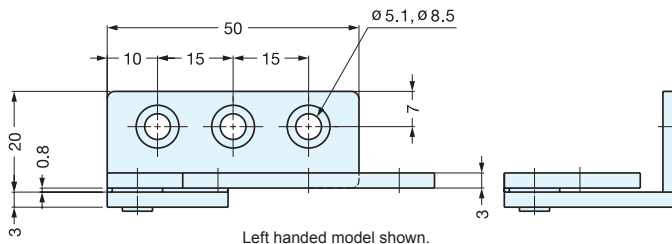
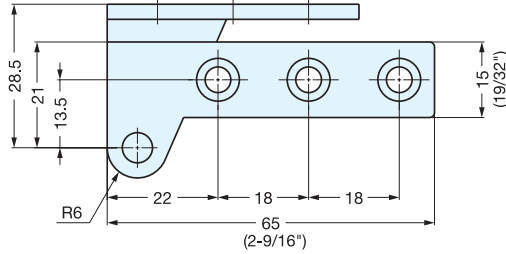


## PL-65

- Door Size: Max. W450 × H700 × t22 mm (W17-3/4" × H27-9/16" × t7/8")
- Door Weight: Max. 4 kg/pair (8.8 lbs/ pair)



Left handed model shown.



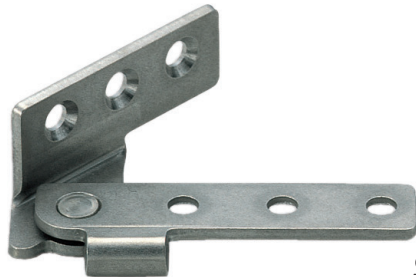
Item No.		Weight (g)	Box (pcs)	Carton (pcs)	Material	Finish
Left	Right					
PL-65L	PL-65R	55	40	400	430 Stainless Steel	Plain

# OVERLAY DOOR PIVOT HINGE

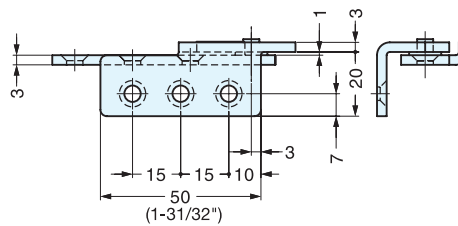
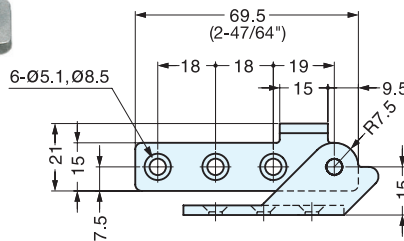


## PL-100

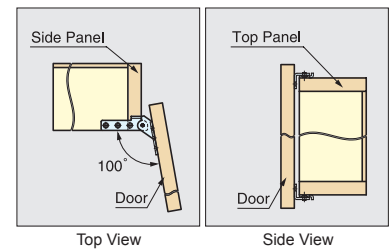
- Door Size: Max. W600 × H750 mm (W23-5/8" × H29-1/2")
- Door Weight: Max. 6 kg/pair (13.2 lbs/pair)



Right handed model shown.



Left handed model shown.



Item No.		Weight (g)	Box (pcs)	Carton (pcs)	Material	Finish
Left	Right					
PL-100L	PL-100R	55	100	1000	304 Stainless Steel	Plain