

SPRING HINGE



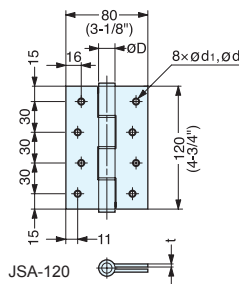
JSA



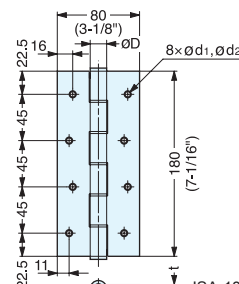
JSA-120A

JSA-180S

- Spring loaded for self closing.
- Adjustable spring tension.
- Successfully passed 500,000 open/close private cycle tests.

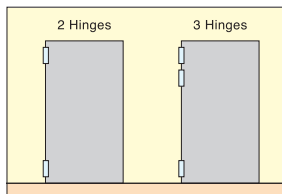


JSA-120

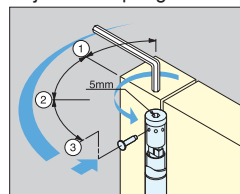


JSA-180

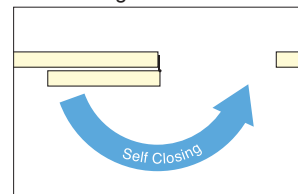
Installation



Adjustable Spring Tension



Self Closing

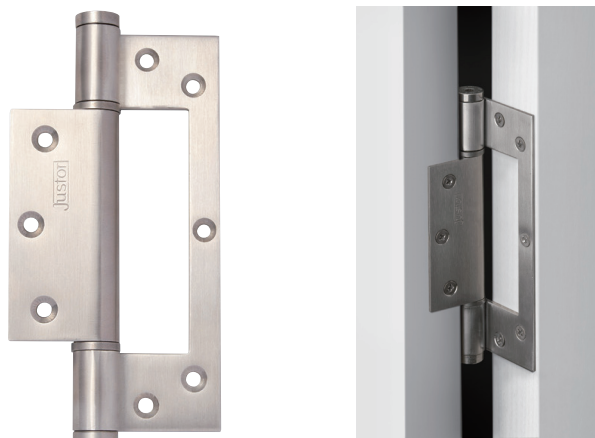


| Item No. | D | t | d ₁ | d ₂ | Load Capacity (kg) | | Weight (g) | Box (pcs) | Carton (pcs) | Material | Finish |
|----------|----|-----|----------------|----------------|--------------------|--------------|------------|-----------|--------------|---------------------|----------|
| | | | | | 2 Hinges | 3 Hinges | | | | | |
| JSA-120A | 16 | 4.0 | 5.0 | 8 | 20 (44 lbs) | 30 (66 lbs) | 175 | 2 | 20 | Aluminum | Anodized |
| JSA-180A | | | | | 40 (88 lbs) | 60 (132 lbs) | | | | | |
| JSA-120S | 17 | 2.5 | 5.5 | 9 | 20 (44 lbs) | 30 (66 lbs) | 303 | 2 | 20 | 304 Stainless Steel | Satin |
| JSA-180S | | | | | 40 (88 lbs) | 60 (132 lbs) | | | | | |

SPRING HINGE

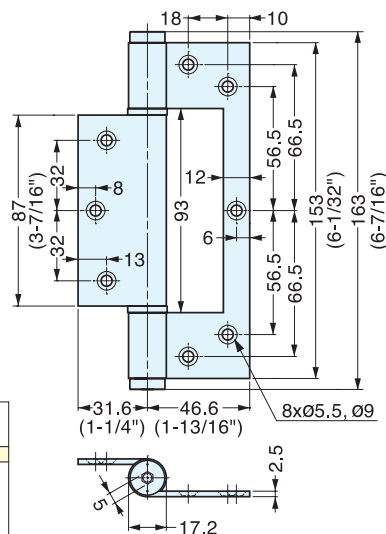


JST-150S

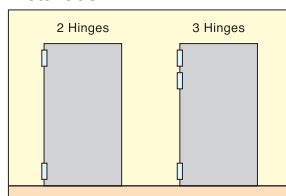


JST-150S

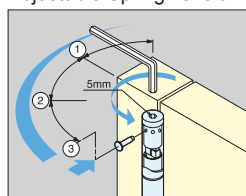
- Spring loaded for self closing.
- Adjustable spring tension.
- Successfully passed 500,000 open/close private cycle tests.



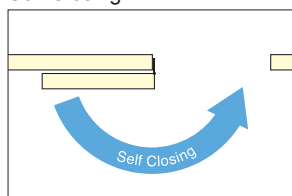
Installation



Adjustable Spring Tension



Self Closing



| Item No. | Load capacity (kg) | | Weight (g) | Box (pcs) | Carton (pcs) | Material | Finish |
|----------|--------------------|--------------|------------|-----------|--------------|---------------------|--------|
| | 2 Hinges | 3 Hinges | | | | | |
| JST-150S | 40 (88 lbs) | 60 (132 lbs) | 336 | 2 | 20 | 304 Stainless Steel | Satin |