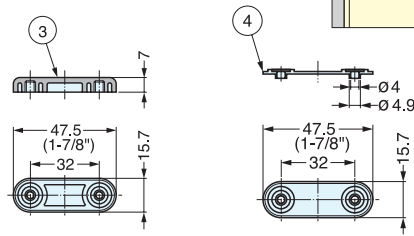
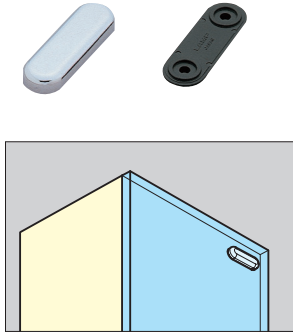
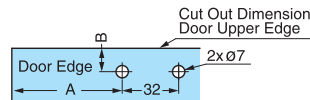
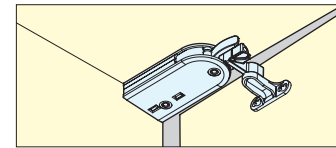
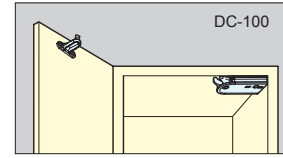
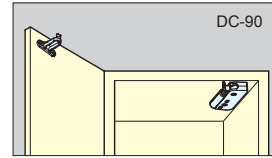


DAMPER CATCH

- Left- and right-handed catches with built-in damper, closes doors smoothly.
- Slim design suitable for various inset and overlay door installations.
- Available for both wood and glass cabinet doors.
- Glass face plate SDS-50G sold separately.
- Includes screws.



Installation

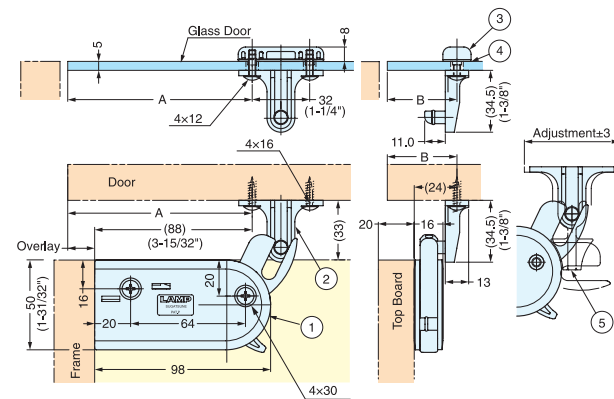
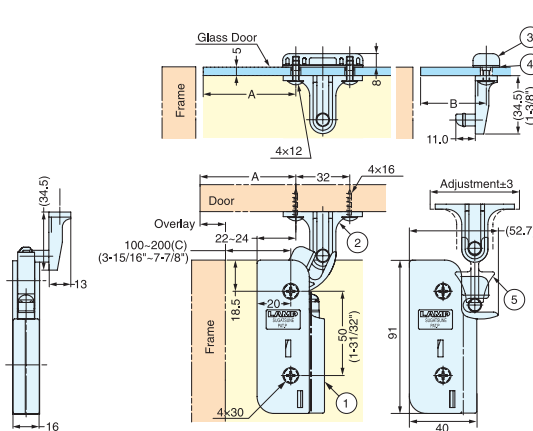


■ DC-90

Installation Position	A	B
Inset Door	Gap between door side board	Gap between door side board
Overlay Door	C + Overlay + 3	Overlay + 24

■ DC-100

Installation Position	A	B
Inset Door	Gap between door side board	Gap between door side board
Overlay Door	88 + Overlay	Overlay + 24



■ Face Plate (Sold Separately)

Item No.	Weight (g)	Box (pcs)
SDS-50G-CR	25	50

No.	Part Name	Material	Finish/Color
①	Body	Polyacetal (POW) / PBT	Dark Grey/Light Grey
②	Trigger	Polyacetal (POW)	Dark Grey
③	Face Plate	Zinc Alloy (ZDC)	Chrome
④	Spacer	ABS	Black
⑤	Trigger Installation Jig	PBT	Light Grey

Item No.	Spec.	Door With (mm)	Door Height (mm)	Door Thickness (mm)	Door Weight (kg)	Weight (g)	Box (pcs)	Carton (pcs)
DC-90	For Wooden Door	450 (17-23/32")	600 (23-5/8")	-	4 (8.8 lbs)	46	25	200
DC-90G	For Glass Door			5		71		
DC-100	For Wooden Door	600 (23-5/8")	800 (31-1/2")	-	7 (15.4 lbs)	66		
DC-100G	For Glass Door			5		91		