

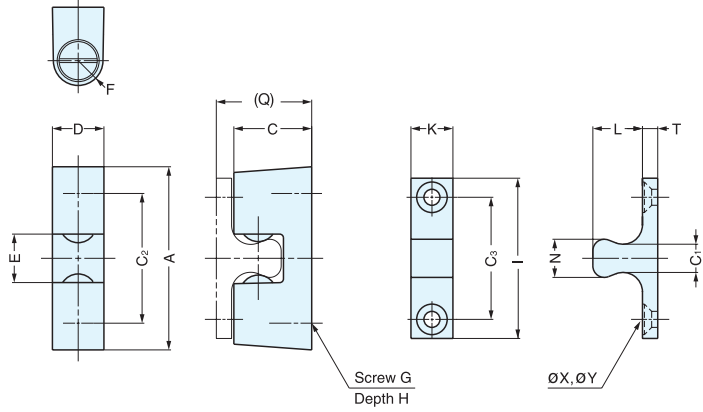
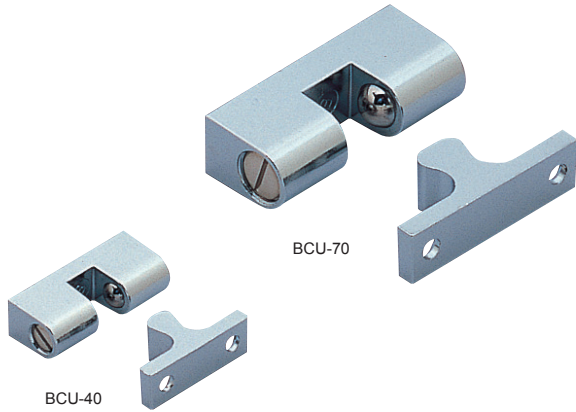
TENSION CATCH

TEST 10
P.697



BCU

• Tension force is not adjustable.



Item No.	A	C	C ₁	C ₂	C ₃	D	E	F	G	H	I	K	L	N	(Q)	T	X	Y
BCU-40	28.5 (1-1/8")	12.5	3.0	20	16	8.3 (21/64")	6.5	R4.0	M3	5	24 (15/16")	8	9	5	15.7	3	3.2	6.2
BCU-70	48.0 (1-57/64")	20.5	7.3	34	32	13.5 (17/32")	12.7	R6.5	M5	6	42 (1-42/64")	11	13	10	24.9	4	4.2	8.2

Item No.	Push in Force (kg)	Pulling Force (kg)	Weight (g)	Box (pcs)	Carton (pcs)	Material	Finish
BCU-40	3.6 (7.9 lbs)	2.4 (5.3 lbs)	18	100	400	Zinc Alloy	Chrome
BCU-70	4.1 (9.0 lbs)	3.9 (8.6 lbs)	75	50	200		

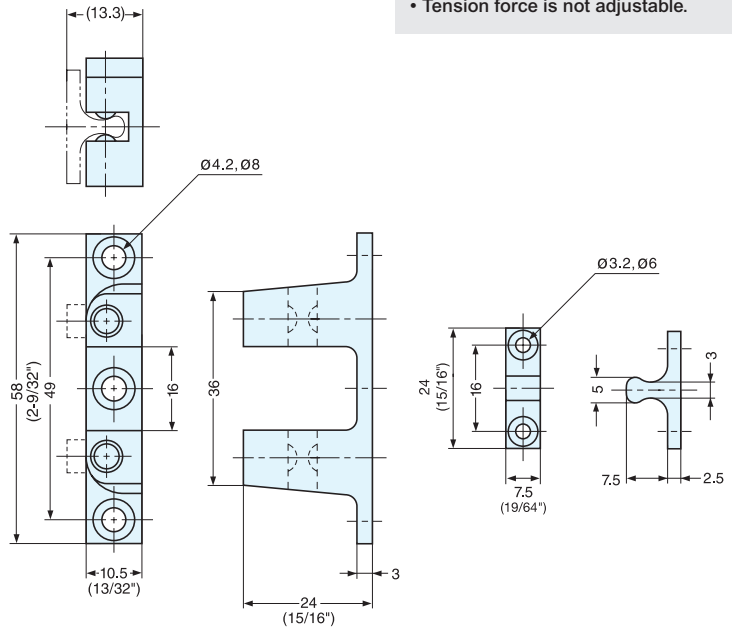
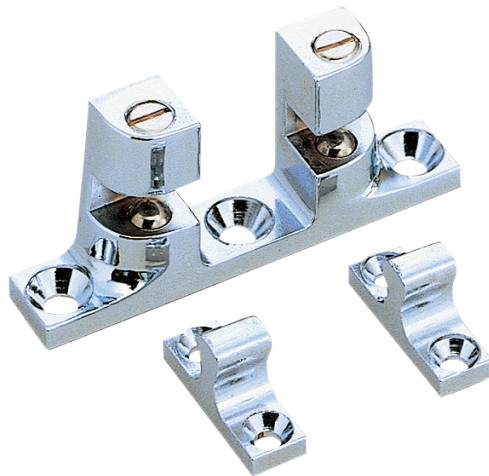
TENSION CATCH

TEST 10
P.697



BCT-60W

• Tension force is not adjustable.



Item No.	Push in Force (kg)	Pulling Force (kg)	Weight (g)	Box (pcs)	Carton (pcs)	Material	Finish
BCT-60W	3.2 (7 lbs)	2.7 (5.9 lbs)	39.5	80	320	Zinc Alloy	Chrome

~~DISCONTINUED~~