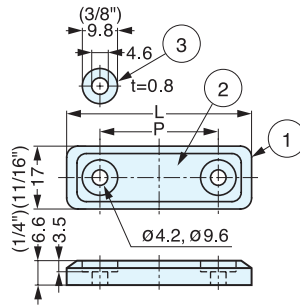


# SEALED MAGNETIC CATCH



## MC-MSH



- Sealed with silicon rubber to reduce noise when door closes.
- Strong magnetic force.
- Optional counterplate sold separately
  - Stainless Steel - MCJM49, AS-68
  - Plastic Sealed - MC-JMP45
- Screws not included: M4 truss screw recommended.

No.	Part Name	Material	Finish/Color
①	Body	Silicone Rubber	Blue
②	Magnet	Neodymium	Nickel
③	Washer	304 Stainless Steel	Plain

Item No.	L	P	Magnetic Force (kg)	Weight (g)	Box (pcs)	Carton (pcs)
MC-MSH45BU	45 (1-49/64")	27 (1-1/16")	2.0 (4.4 lbs)	12	100	1000
MC-MSH50BU	50 (1-31/32")	32 (1-17/64")	4.0 (8.8 lbs)	15		

# MAGNETIC CATCH

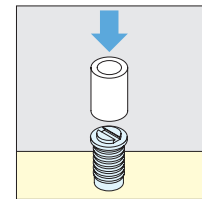
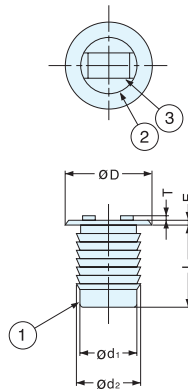
## IS-4



IS-4/WHT



IS-4/BLK



Installation

No.	Part Name	Material	Finish/Color
①	Housing	Polypropylene	White (WHT), Black (BLK)
②	Yoke	Steel	Yellow Zinc Chromate
③	Magnet	Ferrite	-

Item No.	D	L	E	T	d <sub>1</sub>	d <sub>2</sub>	Magnetic Force (kg)	Weight (g)	Box (pcs)	Carton (pcs)
IS-4/WHT	14 (35/64")	14 (35/64")	0.7	1.2	11	12	2.5 (5.5 lbs)	7.7	200	3000
IS-4/BLK										

# MAGNETIC CATCH (AND OPTIONAL SNAP-IN HOLDER)



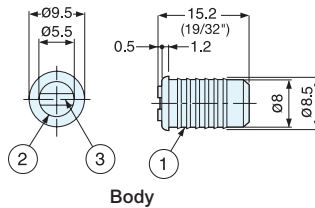
## NB01



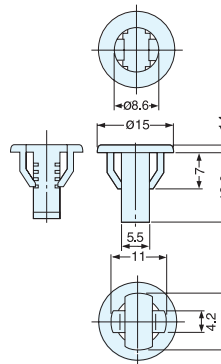
NB01H



NB01H/WHT

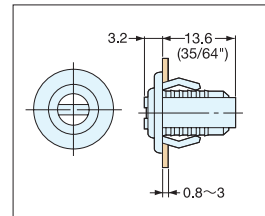


Body



Snap-In Holder

- Snap-in holder for sheet metal 1/32" to 1/8" (0.8-3 mm).



### ■ Snap-In Holder (Optional)

Item No.	Weight (g)
NB01H	0.5

### ■ Main Body

Item No.	Magnetic Force (kg)	Weight (g)	Box (pcs)	Carton (pcs)
NB01/WHT	1.1 (2.4 lbs)	2	500	5000

No.	Part Name	Material	Finish/Color	Door Thickness	Cut Out Dimensions
①	Housing	Polyamide	White (WHT)	0.8-1.4	Ø11.5
②	Yoke	Steel	Chromate		
③	Magnet	Ferrite	-	1.5-3.0	Ø12.0