



SUGATSUNE



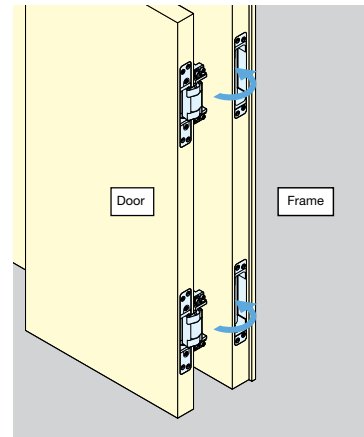
DOOR HARDWARE

Build NY Expo 2022 

Concealed Hinges HES3D Series

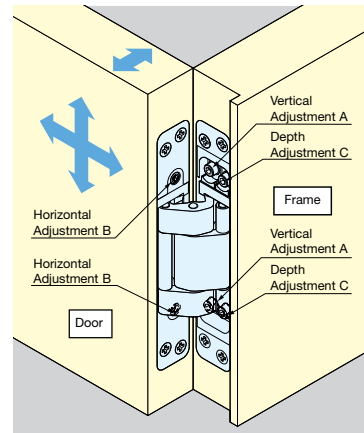
LIFT-OFF FEATURE

Here's Why:
Sugatsune's HES3D series hinges incorporate a **LIFT-OFF FEATURE** that allow the hinge leaves to separate. One leaf is installed in the door frame, while the other is installed into the door itself. You can then install and adjust the door at any time.



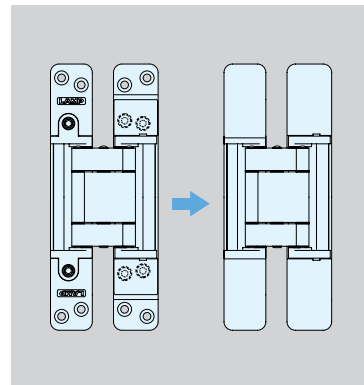
3-WAY ADJUSTABLE FEATURE

Explained:
HES3D series hinges have vertical, horizontal, and depth adjustment features, so if your door isn't perfectly aligned on the first try, this feature allows adjustments in each direction.



OVERALL LOOK

HES3D series hinges come with cover caps to hide all screws on the face of the hinge. So when your hinge is installed, it has a clean, sleek appearance.



UL® LISTED

HES3D-E190 and HES3D-W190 are
UL® Listed with 3 hour fire rating.



FULL SIZE DOORS



Cladded Doors HES3D-W190*

Min. Door Thickness: 1-5/8" (42mm)
Max. Door Dimensions: 96-1/16" x 36" (2440 x 915mm)
Max. Door Weight: 220lbs (99kg)/2pcs or 275lbs (125kg)/3pcs
Finishes: Dull Chrome, Dull Nickel, White, Polished Brass, Polished Nickel, Matte Black.

***UL Listed with 3 Hour Fire Rating**

FOR MORE DETAILS
General Catalog Pg. 185.1



Full Sized Doors HES3D-E190*

Min. Door Thickness: 1-1/2" (38mm)
Max. Door Dimensions: 94-1/2" x 35-7/16" (2400 x 900mm)
Max. Door Weight: 220lbs (99kg)/2pcs or 275lbs (125kg)/3pcs
Finishes: Dull Chrome, Dull Nickel, Polished Nickel, Matte Black, White

***UL Listed with 3 Hour Fire Rating**

FOR MORE DETAILS
General Catalog Pg. 184

SMALL to MID-SIZE DOORS



HES3D-E160

Min. Door Thickness: 1-3/8" (35mm)
Max. Door Dimensions: 94-1/2" x 35-7/16" (2400 x 900mm)
Max. Door Weight: 121lbs (55kg)/2pcs or 154lbs (70kg)/3pcs
Finishes: Dull Chrome, Dull Nickel, Matte Black

FOR MORE DETAILS
General Catalog Pg. 183



HES3D-120

Min. Door Thickness: 1-1/8" (29mm)
Max. Door Dimensions: 94-1/2" x 35-7/16" (2400 x 900mm)
Max. Door Weight: 66lbs (30kg)/2pcs or 88lbs (40kg)/3pcs
Finishes: Dull Chrome, Dull Nickel, Matte Black

FOR MORE DETAILS
General Catalog Pg. 182

CABINET DOORS



HES3D-90

Min. Door Thickness: 15/16" (23mm)
Max. Door Dimensions: 59-1/16" x 23-5/8" (1500 x 600mm)
Max. Door Weight: 26lbs(12kg)/2pcs or 35lbs(16kg)/3pcs
Finishes: Dull Chrome, Dull Nickel, Matte Black

FOR MORE DETAILS
General Catalog Pg. 310



HES3D-70

Min. Door Thickness: 3/4" (19mm)
Max. Door Dimensions: 47-1/4" x 23-5/8" (1200 x 600mm)
Max. Door Weight: 19.8lbs (9kg)/2pcs or 26.4lbs (12kg)/3pcs
Finishes: Dull Chrome, Dull Nickel, Matte Black

FOR MORE DETAILS
General Catalog Pg. 309

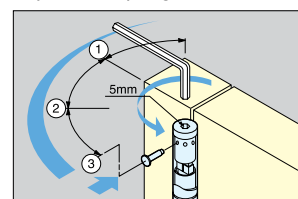


SPRING HINGES JSA SERIES

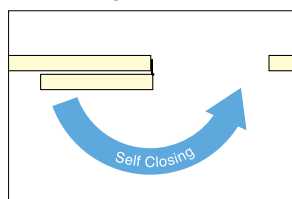


- Spring loaded for self closing.
- Adjustable spring tension.
- Available in 4 sizes/load capacities.
- Successfully passed 500,000 open/close private cycle tests.

Adjustable Spring Tension



Self Closing



Item No.	Load Capacity (kg)		Weight (g)	Box (pcs)	Carton (pcs)	Material	Finish
	2 Hinges	3 Hinges					
JSA-120A	20 (44 lbs)	30 (66 lbs)	175	2	20	Aluminum	Anodized
JSA-180A	40 (88 lbs)	60 (132 lbs)	260				
JSA-120S	20 (44 lbs)	30 (66 lbs)	303			304 Stainless Steel	Satin
JSA-180S	40 (88 lbs)	60 (132 lbs)	526				

SPRING HINGES JST-150S

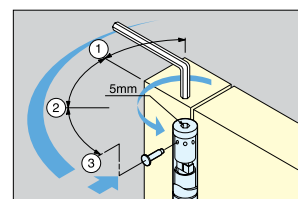


JST-150S

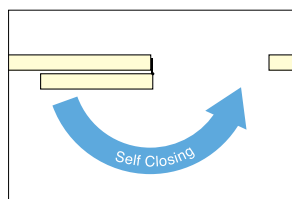


- Spring loaded for self closing.
- Adjustable spring tension.
- Successfully passed 500,000 open/close private cycle tests.

Adjustable Spring Tension

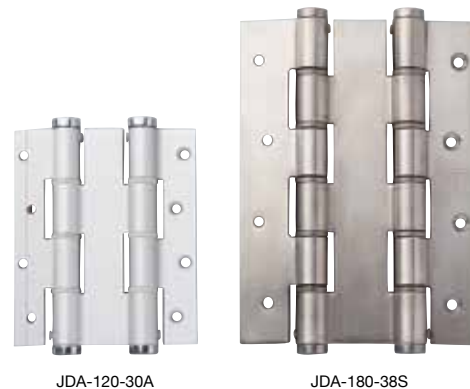


Self Closing



Item No.	Load capacity (kg)		Weight (g)	Box (pcs)	Carton (pcs)	Materials	Finish
	2 Hinges	3 Hinges					
JST-150S	40 (88 lbs)	60 (132 lbs)	336	2	20	304 Stainless Steel	Satin

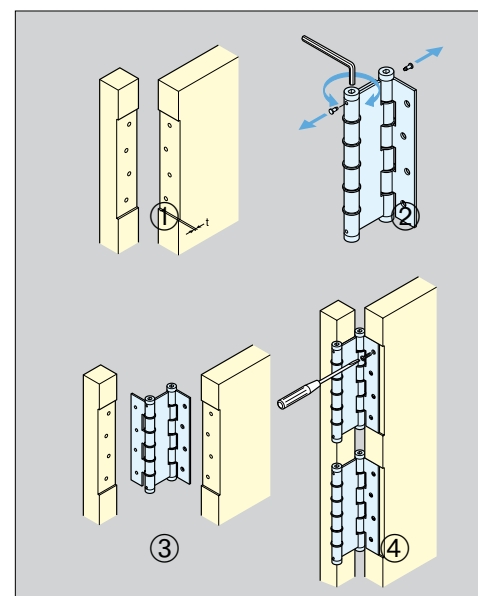
DOUBLE ACTION SPRING HINGES JDA



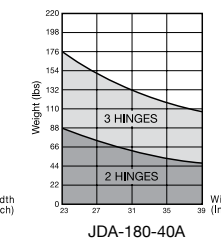
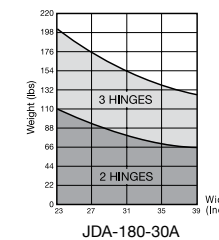
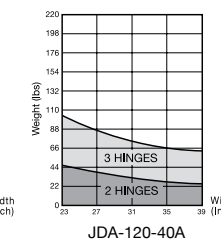
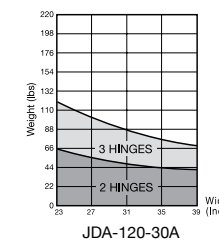
JDA-120-30A

JDA-180-38S

Installation



- Spring loaded for self closing.
- Adjustable spring tension.
- Available in 7 sizes and 2 materials
- Successfully passed 500,000 open/close private cycle tests.

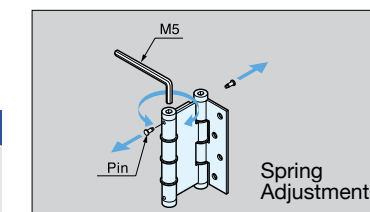
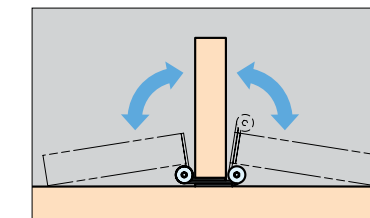
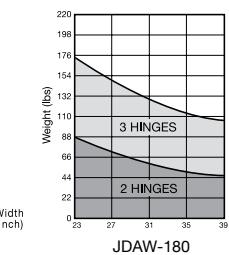
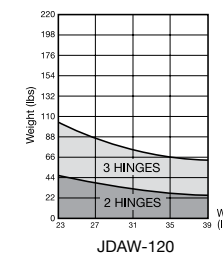


Item No.	Max. Door Thickness	Weight (g)	Material	Finish	Box (pcs)	Carton (pcs)
JDA-120-30A	1-3/16" (30 mm)	275	Aluminum	Anodized	2	20
JDA-120-40A	1-9/16" (40 mm)	320				
JDA-180-30A	1-3/16" (30 mm)	407				
JDA-180-40A	1-9/16" (40 mm)	466				
JDA-180-50A	1-31/32" (50 mm)	510	304 Stainless Steel	Satin	2	20
JDA-120-36S	1-13/32" (36 mm)	555				
JDA-180-38S	1-1/2" (38 mm)	947				

DOUBLE ACTION SPRING HINGES JDAW



- Spring loaded/self closing.
- Adjustable spring tension.
- Available in 2 sizes/strengths
- Requires 8 #8 flathead countersunk screws, 3/4" or longer. (not included)



Item No.	Door Thickness	Weight (g)	Box (pcs)	Carton (pcs)	Material	Finish
JDAW-120-35A	1-3/8" (35 mm)	350	2	20	Aluminum	Anodized
JDAW-180-35A						

RECESSED MOUNT POCKET DOOR SYSTEM

FD80DHCHP-PD

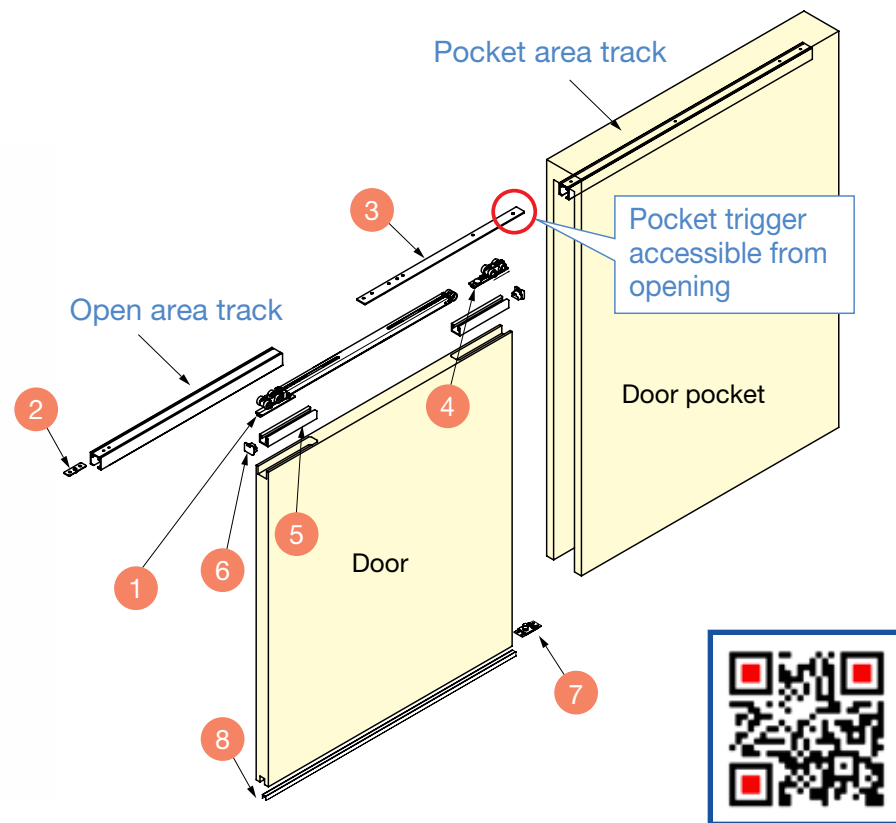
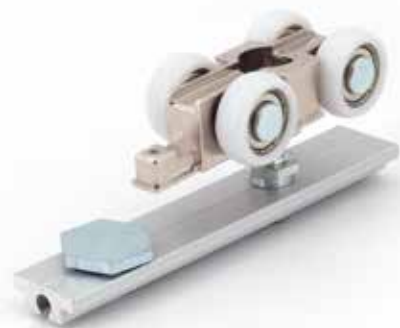


	FD80DHCHP-PD Recessed Mount
Roller	Top Recessed
Track Mounting	Ceiling
Door Weight	Max. 176 lbs (80 kg)
Door Thickness	Recessed: 1-5/16" (34 mm)
Door Width	30-7/8" ~ 59-1/16" (784-1500 mm) [98-7/16" (2500 mm) or less in height] 33-7/16" ~ 59-1/16" (850-1500 mm) [98 7/16" ~ 106-5/16 (2501-2700 mm) in height]

- Easy installation and maintenance.
- Built-in soft-close and soft-open damper.
- Two-rail system, allows all components to be fixed or adjusted through the opening without breaking the pocket (sold separately).
- Use with removable jam/trim/casing.
- For interior use only.
- Rollers are recess mounted to top of door.
- High durability, passed 200,000 cycle test (private).

■ How to order:

1. Select track and track length
2. Choose hardware set
3. See our General Catalog, pg. 535.3 for more details.



SURFACE MOUNT POCKET DOOR SYSTEM

FD80DHCMP-PD

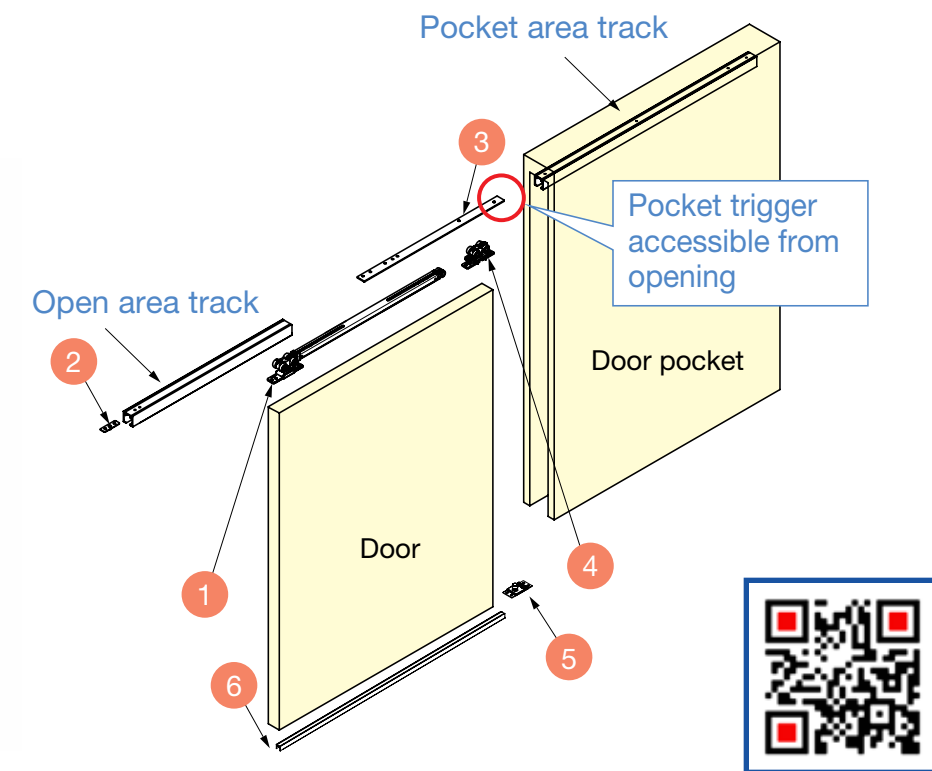


	FD80DHCMP-PD Surface Mount
Roller	Top Surface on Door
Track Mounting	Ceiling
Door Weight	Max. 176 lbs (80 kg)
Door Thickness	Surface: 1-3/16" (30 mm)
Door Width	30-7/8" ~ 59-1/16" (784-1500 mm) [98-7/16" (2500 mm) or less in height] 33-7/16" ~ 59-1/16" (850-1500 mm) [98 7/16" ~ 106-5/16 (2501-2700 mm) in height]

- Easy installation and maintenance.
- Built-in soft-close and soft-open damper.
- Two-rail system, allows all components to be fixed or adjusted through the opening without breaking the pocket (sold separately).
- Use with removable jam/trim/casing.
- For interior use only.
- Rollers are surface mounted to top of door.
- High durability, passed 200,000 cycle test (private).

■ How to order:

1. Select track and track length
2. Choose hardware set
3. See our General Catalog, pg. 535.1 for more details.

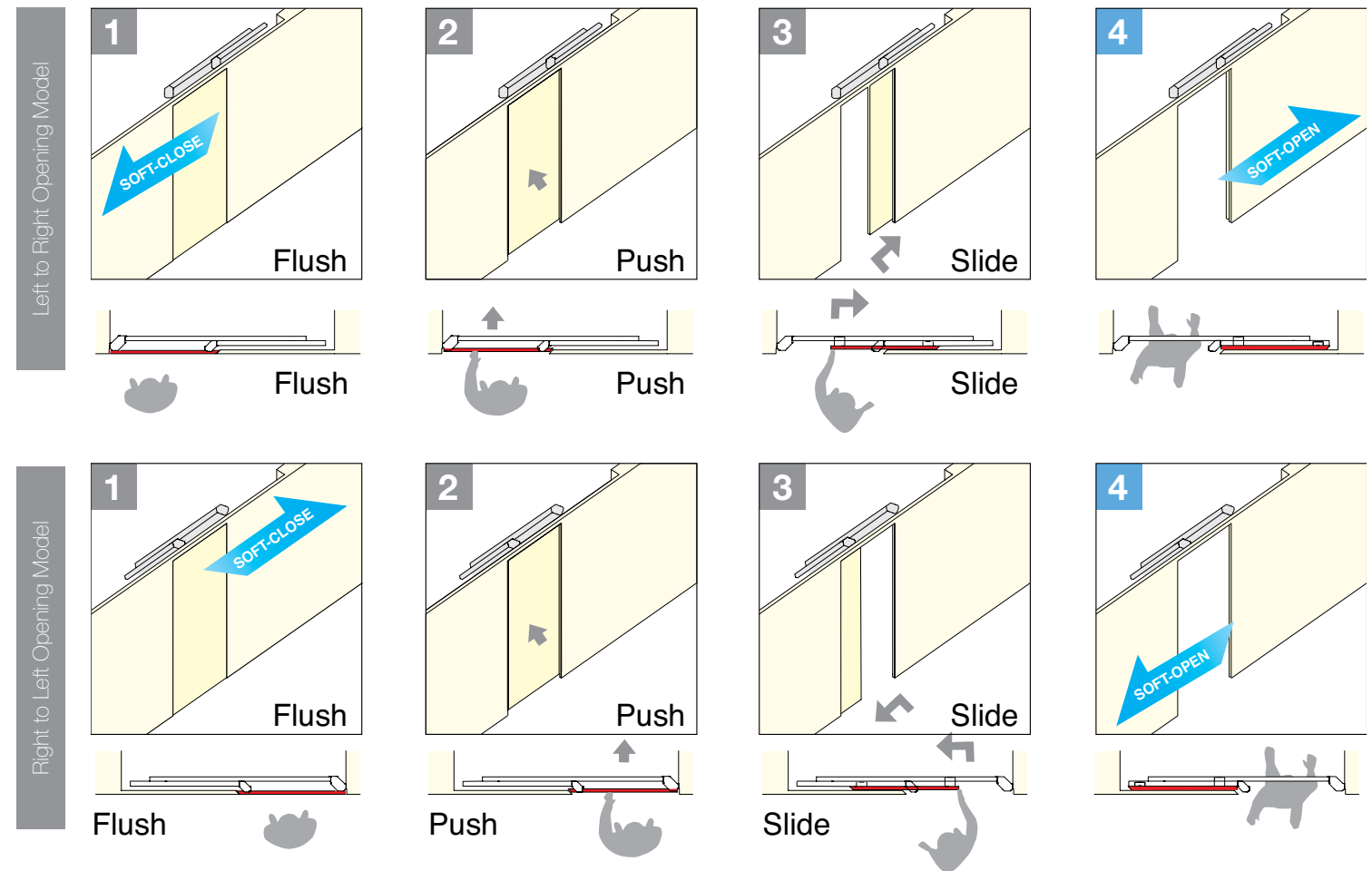


MonoFlat UNISON

	MFU1200-40	MFU1200-70
Door Width	31-1/2"~47-1/4" (800~1200 mm)	
Door Height	Max. 106-5/16" (2700 mm)	
Door Thickness	1-3/16"~1-9/16" (30-40 mm)	
Door Weight	44~88 lbs (20-40 kg)	88~154 lbs (40-70 kg)
Adjustability	Depth: ±3.5 mm (1/8")	
	Horizontal: ±4 mm (3/16")	
	Vertical: ±4 mm (3/16")	

- Designed to CLOSE FLUSH against surrounding walls, providing clean appearance.
- UNIQUE MOVEMENT: Recesses in, and then slides sideways.
- CLEAN APPEARANCE: No floor tracks required on MFU-System.
- Excellent performance, reliable and fully adjustable.
- Features two way damper to avoid slamming open or closed.
- DURABILITY: High durability, passed 100,000 open/close cycle test (private).

Item No.	Description	Door Weight
MFU1200-40-L (Light duty Left)	Left to Right Opening	44 - 88 lbs (20-40 kg)
MFU1200-40-R (Light duty Right)	Right to Left Opening	
MFU1200-70-L (Heavy duty Left)	Left to Right Opening	88-154 lbs (40-70 kg)
MFU1200-70-R (Heavy duty Right)	Right to Left Opening	



* The door cannot be opened from the inside without a handle (not included).

FOR MORE DETAILS
General Catalog Pg. 566



LIN-X1000



FULL SIZE DOORS LIN-X1000

- Lateral Opening Mechanism: Allows doors to swing out laterally in a small radius, ideal for tight front space application.
- Heavy Duty: Max. weight 198 lbs.
- 4-Way Adjustable: Vertical, horizontal, depth and parallel adjustment.
- Smooth Movement: Built-in dampers provide a smooth soft-closing movement.
- Use in various applications: Ideal for closet entryways, large pantry doors, storage, hidden rooms, etc.
- Hardware is non-handed: can be used for left-opening or right-opening doors.
- Designed for overlay installation, but can be installed flush with the surrounding cabinet or wall. Please contact customer service for details on inset installations.



Door Width	29-1/2"~43-5/16" (750~1100 mm)
Max. Door Height	117-5/16" (2980 mm)
Door Thickness	15/16"~1-9/16" (24~40 mm)
Max. Door Weight	198 lbs (90 kg/door)

Item No.	Overlay	Material	Finish
LIN-X1000/WT-S	3/4" (19 mm)	Steel, Aluminum	White
LIN-X1000/BL-S			Black

Which System Works Best for You?

FOR DOORS

LIN-X1000

- Door Width: 29-17/32" ~ 43-5/16" (750~1100 mm)
- Door Height: Max. 117-21/64" (2980 mm)
- Door Thickness: 15/16" ~ 1-37/64" (24~40 mm)
- Door Weight: Max. 198 lbs (90 kg) / Door

FOR MORE DETAILS:
General Catalog Pg. 561

LIN-X800/LIN-X800H

- Door Width: 29-17/32" ~ 33 7/16" (750~850 mm)
- Door Height: Max. 94-1/2" (2400 mm)/117-5/16" (2980 mm)
- Door Thickness: 15/16" ~ 1-9/16" (24~40 mm)
- Door Weight: Max. 88 lbs (40 kg) / Door

FOR CABINETS

LIN-X450

- Door Width: 15-3/4" ~ 19-11/16" (400~500 mm)
- Door Height: Max. 94-1/2" (2400 mm)
- Door Thickness: 5/8" ~ 15/16" (15~24 mm)
- Door Weight: Max. 37.5 lbs (17kg) / Door

FOR MORE DETAILS:
General Catalog Pg. 592

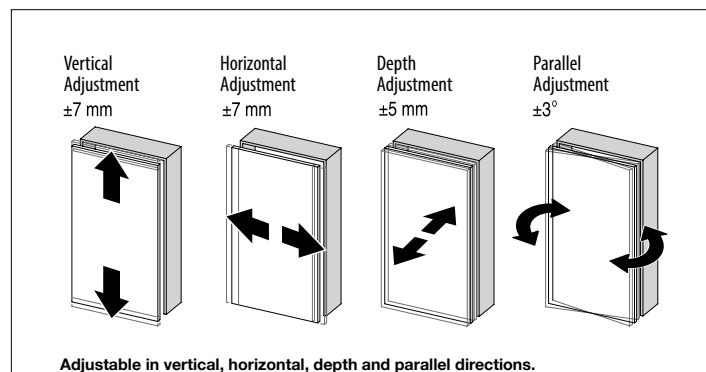
LIN-X600

- Door Width: 21-5/8" ~ 25-9/16" (550~650 mm)
- Door Height: Max. 94-1/2" (2400 mm)
- Door Thickness: 5/8" ~ 15/16" (15~24 mm)
- Door Weight: Max. 52.8 lbs (24kg) / Door

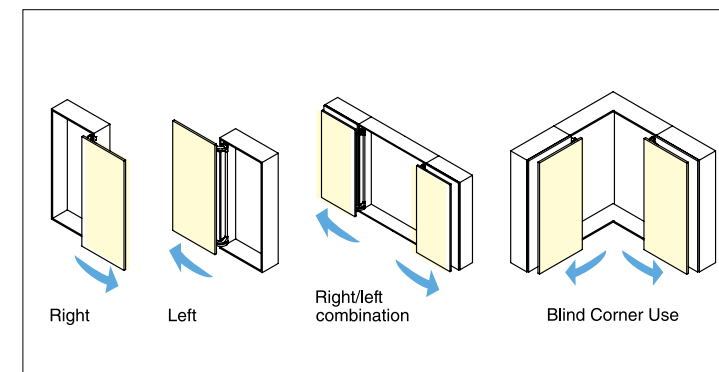
SERIES FEATURES

- Easy Installation with 4-Way Adjustability
- Space-Saving with Lateral Movement
- Full Access to Corner Cabinets
- Soft, Self-Closing Movement
- No Track or Rails Needed
- Allows Door and Cabinets to Stop Freely

Adjustability



Installation Examples



LIN-X800



LIN-X450

LAPCON DOOR DAMPER (Recessed Type)

LDD-V100



LDD-V100-NI-L shown.

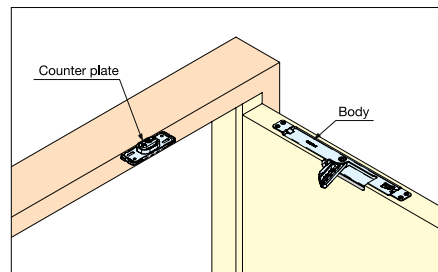
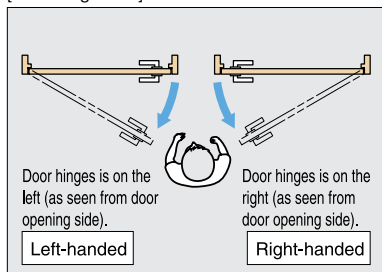
Counter plate cover (Nickel/Dark brown)

- Door damper unit for interior, swinging doors.
- Grips door at final 15° and softly, self-closes doors more gently compared to other door closers, putting less stress on the hinges.
- Heavy Duty: Holds up to 220 lbs doors (100 kg).
- "Invisible" design minimizes visibility of hardware.
- Recommended Door Specifications:
Thickness: min. 1-9/16"~2-3/8"
Width: maximum 35-7/16"
Weight: 88~220 lbs
- Can be adjusted for door weight after installation. Counterplate position can be easily adjusted.
- Includes screws and paper template for installation.

FOR MORE DETAILS
General Catalog Pg. 204

Item No.	Finish/Color	Type
LDD-V100-DBR-R	Dark Brown	Right
LDD-V100-DBR-L		Left
LDD-V100-NI-R	Nickel	Right
LDD-V100-NI-L		Left

[Door Hinge Side]



LAPCON DOOR DAMPER (Recessed Type)

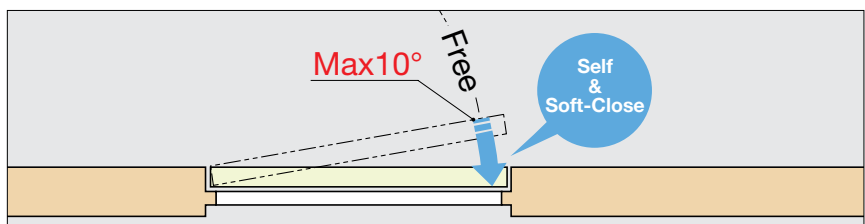
LDD-V



- Door damper unit for interior, swinging doors.
- Grips door at final 10° and softly, self-closes doors more gently compared to other door closers, putting less stress on the hinges.
- "Invisible" design minimizes visibility of hardware.
- Recommended Door Specifications:
Thickness: minimum 33 mm (1-5/16")
Width: maximum 914 mm (3' 0")
Weight: 15~40 kg (33~88 lbs)
- Can be adjusted for door weight after installation. Counterplate position can be easily adjusted by removing cover and turning micro-adjustment screws.
- Includes screws and paper template for installation.

FOR MORE DETAILS
General Catalog Pg. 202

Item No.	Finish/Color	Type
LDD-V-R	Nickel/Grey	Right
LDD-V-L		Left



LAPCON DOOR DAMPER (Surface Mount Type)

LDD-S



LDD-S-R DBR (Right-handed)

- Door damper unit for interior, swinging doors.
- Grips door at final 15° and softly, self-closes doors more gently compared to other door closers.
- Surface mounting allows hardware to be retrofitted.
- Recommended Door Specifications:
Width: Max. 914 mm (3' 0")
Weight: 15~40 kg (33~88 lbs)
- Can be adjusted for door weight after installation. Damper function can also be switched off.
- Slim, unobtrusive design: damper unit is just 3/4" high, easily fitting most door frames.

FOR MORE DETAILS
General Catalog Pg. 200



■ Available in the following colors:



Item No.	Handing	Weight (kg)	Finishes
LDD-S-L	Left	0,55 (1.2 lbs)	White (WT), Light Grey (LGR), Light Brown (LBR), Dark Brown (DBR)
LDD-S-R	Right		



The Magnetic Touch

The mighty **ML-ZN80 Push-To-Open Door Latch** featuring a strong 11 lbs push force, ideal for large doors, and it features a magnet that allows tolerance with 1.5° swivel. The hidden mounting screw design offers a clean appearance and easy installation, available in two finishes.



The only Push-To-Open Door Latch of this category, available in the market.

Item No.	Mag. Force	Push Force	Materials	Finish/Color
ML-ZN80-WT	6.6 lbs	11 lbs	Zinc, Plastic, Stainless Steel	White
ML-ZN80-BL				Black

SLIDING DOOR HANDLES

FOR MORE DETAILS
General Catalog Pgs. 18 - 21



DSI 4251

- Available in 6 sizes



Material	Finish
304 Stainless Steel	Satin, Black

DSI 4253

- Available in 5 sizes

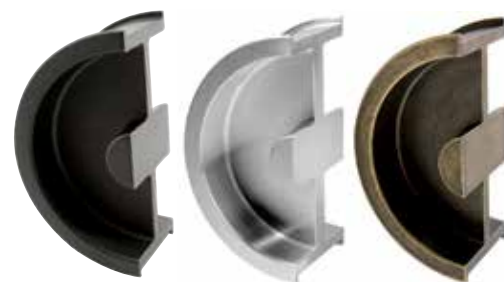


Material	Finish
304 Stainless Steel	Satin, Black

DSI 3250

- Available in 4 sizes
- Available in 3 finishes

Material	Finish
304 Stainless Steel or Brass	Black, Satin, Antique Brass



Black Satin Antique Brass

DSI 4258

- Available in 2 sizes



Material	Finish
304 Stainless Steel	Satin, Black

DSI 4257

- Available in 2 sizes



Material	Finish
304 Stainless Steel	Satin, Black

DOOR STOPPERS

FOR MORE DETAILS
General Catalog Pgs. 206 - 209



SMDH

- Can be wall or floor mounted



Material	Finish
Polycarbonate	Brown, Ivory



KMDH

- Can be wall or floor mounted



Material	Finish
Polycarbonate	Brown, Ivory

DSD-02

- Floor mount type
- Available in 2 sizes



Material	Finish
304 Stainless Steel	Satin, Black

DSD-03

- Wall mount type
- Available in 3 sizes



Material	Finish
304 Stainless Steel	Satin, Black

SMDH

- Features clear acrylic bumper



Material	Finish
304 Stainless Steel	Satin

sugatsune.com



Sugatsune America
18101 Savarona Way,
Carson, CA 90746



LIT-DOOR-BUILDNY-2022